

# Premium Kitchen Storage





**Fit are proud to be the sole New Zealand distributor of Vauth-Sagel's premium kitchen storage range**

Find space you didn't know you had with Vauth-Sagel's kitchen storage solutions. From corner and bench units to narrow pull out units and tall pantries, these are modern, high quality products, all designed and manufactured in Germany to precise standards and for a lifetime of efficient and comfortable use.

View the full Vauth-Sagel range of innovative kitchen storage solutions on our website.

[www.fit-nz.co.nz](http://www.fit-nz.co.nz)



# Premium Kitchen Storage



**Welcome to Fit's Premium Kitchen Storage catalogue**

This catalogue includes detailed product information and many images of units in place to assist with your decision making process. We'd be delighted to answer any additional questions you may have.

For further information or to place an order, talk to your designer, kitchen maker, cabinet maker, or contact us directly via our website.

[www.fit-nz.co.nz](http://www.fit-nz.co.nz)  
[info@fit-nz.co.nz](mailto:info@fit-nz.co.nz)  
 0800 852 258

**Abbreviations**

CAB... External cabinet width (with 16-19mm board)

MIN... Minimum

W..... Internal cabinet width

H..... Internal cabinet height

D..... Internal cabinet depth

Denotes soft close function



## Vauth-Sagel Planero

With technical components being only minimally visible, Planero is aesthetically very pleasing. Powder coated steel plates in contemporary lava grey form around inlaid shelves for a flat design with invisible suspension points. Planero combines high design standards with immensely practical functions, such as shelves being easily removable for cleaning.

“Our products combine functionality, design and comfort. Planero is a perfect example of this.”

Claus Sagel, CEO, Vauth-Sagel







## Vauth-Sagel Tall Pantry Storage

Fixed front panel or behind a hinged door? Whatever your pantry preference, there's a Vauth-Sagel model to suit.

Select from Premea style (classic white bases with chromed rails) or Planero (powder coated steel baskets).

Of course, there are a variety of height and width options, including some for cabinets just 150mm wide.

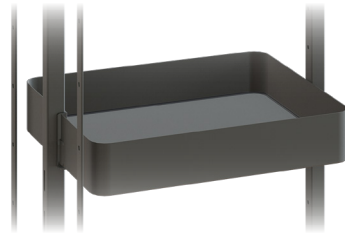


## VS TAL Larder in Planero Style

VAUTH  
SAGEL

A full height pull out for excellent visibility and accessibility

- Attractive and durable powder coated baskets in contemporary lava grey
- Available for cabinet widths of 300mm and 400mm
- 3 variable frame heights:
  - Medium from 1450 to 1700mm
  - Full Height from 1700 to 1950mm
  - Extra Height from 1950 to 2140mm
- 3D adjustment for a perfect fit
- Full extension pull-out with soft-close
- Height adjustable basket
- 16kg load capacity per basket; total sliding load capacity 80kg
- High performance rolling motion with 120kg carrying capacity (including front panel)



Item Code	Description	Cab	Min W	H	Min D
VS102	VS TAL Larder, Medium Height, 5 Planero Baskets	300	250	1450-1700	502
VS106	VS TAL Larder, Medium Height, 5 Planero Baskets	400	350	1450-1700	502
VS103	VS TAL Larder, Full Height, 6 Planero Baskets	300	250	1700-1950	502
VS107	VS TAL Larder, Full Height, 6 Planero Baskets	400	350	1700-1950	502
VS104	VS TAL Larder, Extra Height, 6 Planero Baskets	300	250	1950-2140	502
VS108	VS TAL Larder, Extra Height, 6 Planero Baskets	400	350	1950-2140	502



"We have been using FIT products for a number of years in our bespoke cabinetry. The products are great, the delivery efficient and the customer service is impeccable. Keep up the good work FIT."

**Royale Kitchens**  
Browns Bay, Auckland



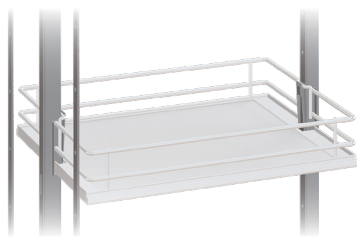


# VS TAL Larder in Premea Style



A quality, classic pull out pantry designed and made in Germany

- Full extension pull out for easy access to all baskets
- Soft close for easy use and less noise
- Available for cabinet widths of 300mm, 400mm, 450mm and 500mm
- 4 frame height options allow for all kitchen configurations
- Height adjustable baskets ensure your pantry set up is perfect for your lifestyle
- 3D adjustment for a perfect fit
- Solid base baskets with chromed wire rails
- 16kg load capacity per basket; total sliding load capacity 80kg
- High performance rolling motion with 120kg carrying capacity (including front panel)



Item Code	Description	Cab	Min W	H	Min D
VSP30.S.P	VS TAL Larder, Short Height, 4 Premea Baskets	300	250	1200-1450	503
VSP40.S.P	VS TAL Larder, Short Height, 4 Premea Baskets	400	350	1200-1450	503
VSP45.S.P	VS TAL Larder, Short Height, 4 Premea Baskets	450	400	1200-1450	503
VSP50.S.P	VS TAL Larder, Short Height, 4 Premea Baskets	500	450	1200-1450	503
VSP30.M.P	VS TAL Larder, Medium Height, 5 Premea Baskets	300	250	1450-1700	503
VSP40.M.P	VS TAL Larder, Medium Height, 5 Premea Baskets	400	350	1450-1700	503
VSP45.M.P	VS TAL Larder, Medium Height, 5 Premea Baskets	450	400	1450-1700	503
VSP50.M.P	VS TAL Larder, Medium Height, 5 Premea Baskets	500	450	1450-1700	503
VSP30.H.P	VS TAL Larder, Full Height, 6 Premea Baskets	300	250	1700-1950	503
VSP40.H.P	VS TAL Larder, Full Height, 6 Premea Baskets	400	350	1700-1950	503
VSP45.H.P	VS TAL Larder, Full Height, 6 Premea Baskets	450	400	1700-1950	503
VSP50.H.P	VS TAL Larder, Full Height, 6 Premea Baskets	500	450	1700-1950	503
VSP30.EH.P	VS TAL Larder, Extra Height, 6 Premea Baskets	300	250	1950-2140	503
VSP40.EH.P	VS TAL Larder, Extra Height, 6 Premea Baskets	400	350	1950-2140	503
VSP45.EH.P	VS TAL Larder, Extra Height, 6 Premea Baskets	450	400	1950-2140	503
VSP50.EH.P	VS TAL Larder, Extra Height, 6 Premea Baskets	500	450	1950-2140	503



Full extension  
for easy access  
to baskets



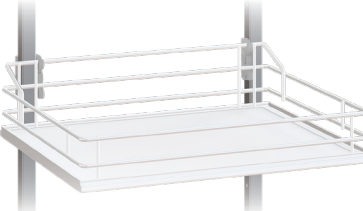


# VS TAL Gate in Premea Style



Durable space-efficient pantry storage for those who prefer a hinged door style

- Durable European design
- Optimal storage space and simple installation
- Pull out with soft close dampener
- Baskets slide out as door opens, for great basket visibility and access
- Available for cabinet widths of 450mm, 500mm and 600mm
- 3 variable frame heights allow for many kitchen configurations
- Height adjustable baskets ensure your pantry set up is perfect for your lifestyle
- High performance rolling motion with 75kg carrying capacity
- Solid base baskets with chromed rails



Item Code	Description	Cab	Min W	H	Min D
VST45.M.P	VS TAL Gate, Medium Height, 4 Premea Baskets	450	412	1450-1700	480
VST50.M.P	VS TAL Gate, Medium Height, 4 Premea Baskets	500	462	1450-1700	480
VST60.M.P	VS TAL Gate, Medium Height, 4 Premea Baskets	600	562	1450-1700	480
VST45.H.P	VS TAL Gate, Full Height, 5 Premea Baskets	450	412	1700-1950	480
VST50.H.P	VS TAL Gate, Full Height, 5 Premea Baskets	500	462	1700-1950	480
VST60.H.P	VS TAL Gate, Full Height, 5 Premea Baskets	600	562	1700-1950	480
VST45.EH.P	VS TAL Gate, Extra Height, 6 Premea Baskets	450	412	1950-2140	480
VST50.EH.P	VS TAL Gate, Extra Height, 6 Premea Baskets	500	462	1950-2140	480
VST60.EH.P	VS TAL Gate, Extra Height, 6 Premea Baskets	600	562	1950-2140	480



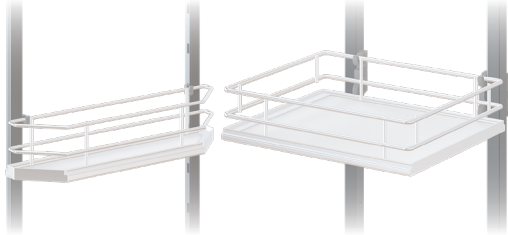


# VS TAL Gate Pro in Premea Style



A quality pantry storage option that includes door baskets for quick access to often-used items

- Very user-friendly operation; baskets slide out of the cabinet as the door is opened
- Handy door baskets for small and/or frequently accessed items
- Soft close feature for easy use and quiet closing
- Individually height adjustable baskets in pantry and on door
- Available for cabinet widths of 450mm and 600mm
- 3 variable frame heights allow for many kitchen configurations
- Solid base baskets with chromed rails
- Load capacity: 5kg per door basket (maximum 20kg on door) and 20kg per basket (maximum 80kg on main unit)



Item Code	Description	Cab	Min W	H	Min D
VSL45.S.P	VS TAL Gate Pro, Short Height, 4 Premea Baskets	450	412	1450-1700	503
VSL60.S.P	VS TAL Gate Pro, Short Height, 4 Premea Baskets	600	562	1450-1700	503
VSL45.H.P	VS TAL Gate Pro, Full Height, 5 Premea Baskets	450	412	1700-1950	503
VSL60.H.P	VS TAL Gate Pro, Full Height, 5 Premea Baskets	600	562	1700-1950	503
VSL45.EH.P	VS TAL Gate Pro, Extra Height, 6 Premea Baskets	450	412	1950-2140	503
VSL60.EH.P	VS TAL Gate Pro, Extra Height, 6 Premea Baskets	600	562	1950-2140	503



Very user-friendly operation; baskets slide out of the cabinet as the door is opened



# VS TAL Bottle 15



A brilliant mix of efficient use of space and attractive display of your wine. Excellent visibility due to a full extension pull out means you can find that special bottle fast!

- Optimum use of space
- Attractive display of your wine collection
- Full extension for maximum visibility
- Requires a cabinet just 150mm wide
- European made slides for easy use and quiet closing
- Storage capacity 16-20 bottles
- 25kg load capacity
- 3D front adjustment for a perfect fit



Item Code	Description	Cab	Min W	H	Min D
VSW15.S.C	VS TAL Bottle 15	150	104	1780	500



Soft close feature for easy use and quiet closing



Photo courtesy of Cooper Webley Residential and Commercial Joinery





# VS TAL Rack 15



Tall and trim; ideal storage for pantry provisions such as packets, cans, jars and bottles, or even as a space efficient unit in the laundry

- Optimum use of space
- Tall pull out with five chromed wire trays for great, space efficient pantry storage
- Full extension for maximum visibility
- Universally handed for easy installation and convenient two-sided access to contents
- Requires a cabinet just 150mm wide
- European made slides for easy use and quiet closing
- 25kg load capacity
- 3D front adjustment for a perfect fit



Item Code	Description	Cab	Min W	H	Min D
VSB15.S.C	VS TAL Rack 15	150	104	1780	500



Soft close feature for easy use and quiet closing



Above photos courtesy of The Sellers Room, Stoke, Nelson

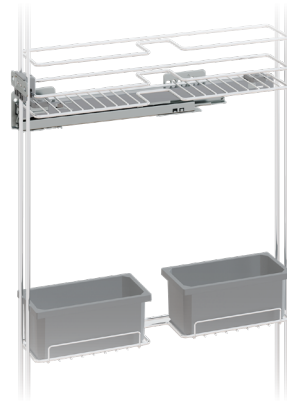


## VS TAL Broom 15



**Ideal for kitchens, laundries and hallways; superb tall, narrow pull out storage for a broom and cleaning supplies**

- Includes five shelves and four 1.2 litre plastic boxes
- Like all pull outs, brings items at rear of cabinet out to you for full visibility and easy access
- Damping mechanism for smooth and silent use
- Features Vauth-Sagel's EasyFit self-locking system for tool-free installation of frame onto guides, plus easy connection of front to frame
- 25kg load capacity
- 3D front adjustment for a perfect fit
- Available in left access and right access options



Item Code	Description	Cab	Min W	H	Min D
VS701	VS TAL Broom 15, Left Side Access	150	104	1780	500
VS702	VS TAL Broom 15, Right Side Access	150	104	1780	500

### Maximum Broom Dimensions:

**Total Length:** 1500mm

**Handle Length:** 1460mm

**Handle Diameter:** 40mm

**Head:** 450mm x 95mm and 110mm deep including head and bristles







## Vauth-Sagel Corner Storage

Corner cabinets provide ample storage space but can be dark and tricky to get into. Whether your corner has one opening door (blind corner) or two, there's a quality Vauth-Sagel unit to make that space accessible.



# VS COR Fold in Planero Style



Tricky corner cabinet with just one door? VS COR Fold brings stored items out to you!

- Attractive and durable powder coated baskets in contemporary lava grey
- Cabinet widths: 800mm and 900mm
- Door widths: 400mm and 450mm
- EasyFit: tool-free installation of the front onto pull-out
- 3D front adjustment for a perfect fit
- Individual height adjustment for baskets
- Maximum load: 8kg per front basket, 9.5kg per rear basket
- Maximum load-bearing: 35kg
- Integrated 3D front adjustment and central height alignment for a perfect fit
- Quiet and smooth closing via an integrated damping feature
- Storage space:  
800mm units: Approx 0.447m<sup>2</sup> over 4 baskets  
900mm units: Approx 0.662m<sup>2</sup> over 4 baskets



Item Code	Description	Cab	Door	Min W	Min H	Min D
VS222	VS COR Fold, 4 Planero Baskets, Left Opening	800	400	768	530	485
VS223	VS COR Fold, 4 Planero Baskets, Right Opening	800	400	768	530	485
VS224	VS COR Fold, 4 Planero Baskets, Left Opening	900	450	868	530	485
VS225	VS COR Fold, 4 Planero Baskets, Right Opening	900	450	868	530	485



Right opening unit shown





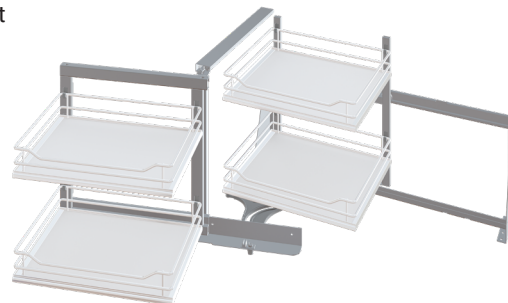
## VS COR Fold in Premea/Saphir styles



VAUTH  
SAGEL

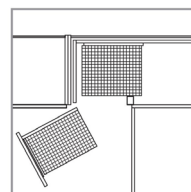
Make blind corner cabinets easy to access with this user-friendly unit; front baskets swing sideways and rear baskets move forwards

- Available for cabinet widths of 800mm and 900mm (depending on model)
- Options for door widths of 400mm and 450mm (depending on model)
- Left-hand and right-hand opening versions available to suit your layout
- Individually height adjustable baskets; set up to suit your lifestyle
- Maximum load: 8kg per front basket, 9.5kg per rear basket
- Maximum load-bearing: 35kg
- Integrated 3D front adjustment and central height alignment for a perfect fit
- Quiet and smooth closing via an integrated damping feature
- Solid base baskets (Premea) or mesh base baskets (Saphir) with chromed wire rails
- Storage space:  
800mm units: Approx 0.447m<sup>2</sup> over 4 baskets  
900mm units: Approx 0.662m<sup>2</sup> over 4 baskets

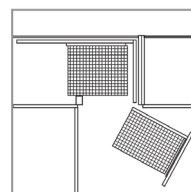


Item Code	Description	Cab	Door	Min W	Min H	Min D
VSMC.90L.P	VS COR Fold, 4 Premea Baskets, Left Opening	900	450	868	530	485
VSMC.90R.P	VS COR Fold, 4 Premea Baskets, Right Opening	900	450	868	530	485
VSMC.80L.S	VS COR Fold, 4 Saphir Baskets, Left Opening	800	400	768	530	485
VSMC.80R.S	VS COR Fold, 4 Saphir Baskets, Right Opening	800	400	768	530	485
VSMC.90L.S	VS COR Fold, 4 Saphir Baskets, Left Opening	900	450	868	530	485
VSMC.90R.S	VS COR Fold, 4 Saphir Baskets, Right Opening	900	450	868	530	485

Left Hand



Right Hand



"FIT products match that of top brands with quality and functionality at a much more competitive rate and they come with a warranty. Try them, you will not be disappointed."

**Bremich Cabinetmakers  
Swanson, Auckland**



Premea baskets



Saphir baskets

Left opening unit shown  
Photo courtesy of Cooper Webley Residential and Commercial Joinery



# VS Cornerstone MAXX in Planero Style

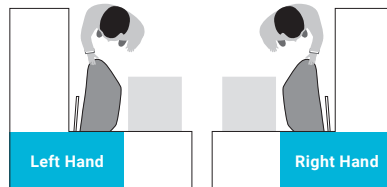


Make blind corner cabinet space so much more accessible with one of our most popular swing out units

- Attractive and durable powder coated baskets in contemporary lava grey
- Left and right handed models available
- EasyFit: tool-free assembly of shelves onto arms
- Simple height adjustment, even when installed
- Hidden fastening provides a floating look for great aesthetics
- Wide, stable shelves move independently and do not obstruct adjacent cabinets
- PAM: non-electric power assisted movement
- Available for cabinet widths of 800mm, 900mm and 1000mm
- Options for door widths of 400mm, 450mm and 500mm
- Load capacity: 25kg per shelf
- Storage space:
  - 800mm/400mm door units: Approx 0.370m<sup>2</sup> over 2 shelves
  - 900mm/450mm door units: Approx 0.447m<sup>2</sup> over 2 shelves
  - 1000mm/500mm door units: Approx 0.590m<sup>2</sup> over 2 shelves



Item Code	Description	Cab	Door	Min W	H	Min D
VS217	VS Cornerstone MAXX, Planero, Left Hand, 2 Shelf	800	400	768	650-850	490
VS216	VS Cornerstone MAXX, Planero, Right Hand, 2 Shelf	800	400	768	650-850	490
VS219	VS Cornerstone MAXX, Planero, Left Hand, 2 Shelf	900	450	868	650-850	490
VS218	VS Cornerstone MAXX, Planero, Right Hand, 2 Shelf	900	450	868	650-850	490
VS221	VS Cornerstone MAXX, Planero, Left Hand, 2 Shelf	1000	500	968	650-850	490
VS220	VS Cornerstone MAXX, Planero, Right Hand, 2 Shelf	1000	500	968	650-850	490



Right hand unit shown

Above photos courtesy of Henry Don, Fit's Customer Service lead





## VS Cornerstone MAXX in Premea Style

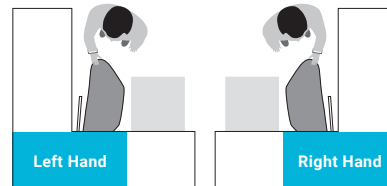


Get easy access to corner cabinet contents without obstructing adjacent cabinets (or the dishwasher!)

- Solid base baskets with chromed wire rails
- Left and right handed models available
- EasyFit: tool-free assembly of shelves onto arms
- Simple height adjustment, even when installed
- Hidden fastening provides a floating look for great aesthetics
- Wide, stable shelves move independently and do not obstruct adjacent cabinets
- PAM: non-electric power assisted movement
- Available for cabinet widths of 800mm, 900mm and 1000mm
- Options for door widths of 400mm, 450mm and 500mm
- Load capacity: 25kg per shelf
- Storage space:
  - 800mm/400mm door units: Approx 0.370m<sup>2</sup> over 2 shelves
  - 900mm/450mm door units: Approx 0.447m<sup>2</sup> over 2 shelves
  - 1000mm/500mm door units: Approx 0.590m<sup>2</sup> over 2 shelves



Item Code	Description	Cab	Door	Min W	H	Min D
VS210	Cornerstone MAXX, Premea, Left Hand, 2 Shelf	800	400	768	650-850	490
VS211	Cornerstone MAXX, Premea, Right Hand, 2 Shelf	800	400	768	650-850	490
VS212	Cornerstone MAXX, Premea, Left Hand, 2 Shelf	900	450	868	650-850	490
VS213	Cornerstone MAXX, Premea, Right Hand, 2 Shelf	900	450	868	650-850	490
VS214	Cornerstone MAXX, Premea, Left Hand, 2 Shelf	1000	500	968	650-850	490
VS215	Cornerstone MAXX, Premea, Right Hand, 2 Shelf	1000	500	968	650-850	490





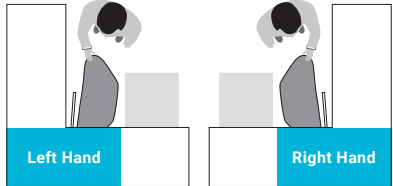
# VS Cornerstone MAXX in Planero Style 4 Shelf



A brilliant option for turning awkward corner spaces into efficient pantry storage

- 4 shelf model has an extended central post to provide even more storage
- Attractive and durable powder coated baskets in contemporary lava grey
- Cabinet widths: 800mm and 900mm
- Door widths: 400mm and 450mm
- EasyFit: tool-free installation of the front onto pull-out
- 3D front adjustment for a perfect fit
- Individual height adjustment for baskets
- Maximum load: 8kg per front basket, 9.5kg per rear basket
- Maximum load-bearing: 35kg
- Integrated 3D front adjustment and central height alignment for a perfect fit
- Quiet and smooth closing via an integrated damping feature
- Storage space:  
800mm/400mm door units: Approx 0.740m<sup>2</sup> over 4 shelves  
900mm/450mm door units: Approx 0.894m<sup>2</sup> over 4 shelves  
1000mm/500mm door units: Approx 1.180m<sup>2</sup> over 4 shelves

Item Code	Description	Cab	Door	Min W	H	Min D
VS217.4	VS Cornerstone MAXX, Planero, Left Hand, 4 Shelf	800	400	768	1350-1600	490
VS216.4	VS Cornerstone MAXX, Planero, Right Hand, 4 Shelf	800	400	768	1350-1600	490
VS219.4	VS Cornerstone MAXX, Planero, Left Hand, 4 Shelf	900	450	868	1350-1600	490
VS218.4	VS Cornerstone MAXX, Planero, Right Hand, 4 Shelf	900	450	868	1350-1600	490
VS221.4	VS Cornerstone MAXX, Planero, Left Hand, 4 Shelf	1000	500	968	1350-1600	490
VS220.4	VS Cornerstone MAXX, Planero, Right Hand, 4 Shelf	1000	500	968	1350-1600	490



Open shelves do not block the adjacent cabinet; great for emptying the dishwasher directly into the corner cupboard





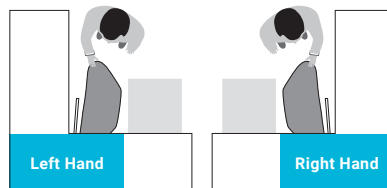
## VS Cornerstone MAXX in Premea Style 4 Shelf



Turn tricky corner cabinets into convenient storage below or above the bench

- 4 shelf model has an extended central post to provide even more storage
- Solid base baskets with chromed wire rails
- Left and right handed models available
- EasyFit: tool-free assembly of shelves onto arms
- Simple height adjustment, even when installed
- Hidden fastening provides a floating look for great aesthetics
- Wide, stable shelves move independently and do not obstruct adjacent cabinets
- PAM: non-electric power assisted movement
- Available for cabinet widths of 800mm, 900mm and 1000mm
- Options for door widths of 400mm, 450mm and 500mm
- Load capacity: 25kg per shelf
- Storage space:  
800mm/400mm door units: Approx 0.740m<sup>2</sup> over 4 shelves  
900mm/450mm door units: Approx 0.894m<sup>2</sup> over 4 shelves  
1000mm/500mm door units: Approx 1.184m<sup>2</sup> over 4 shelves

Item Code	Description	Cab	Door	Min W	H	Min D
VS210.4	VS Cornerstone MAXX, Premea, Left Hand, 4 Shelf	800	400	768	1350-1600	490
VS211.4	VS Cornerstone MAXX, Premea, Right Hand, 4 Shelf	800	400	768	1350-1600	490
VS212.4	VS Cornerstone MAXX, Premea, Left Hand, 4 Shelf	900	450	868	1350-1600	490
VS213.4	VS Cornerstone MAXX, Premea, Right Hand, 4 Shelf	900	450	868	1350-1600	490
VS214.4	VS Cornerstone MAXX, Premea, Left Hand, 4 Shelf	1000	500	968	1350-1600	490
VS215.4	VS Cornerstone MAXX, Premea, Right Hand, 4 Shelf	1000	500	968	1350-1600	490



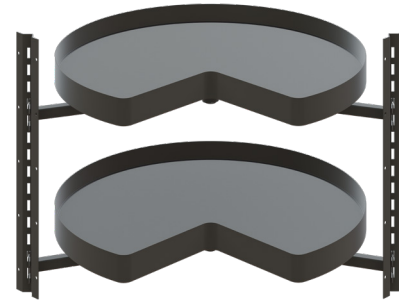


## VS COR Wheel Pro in Planero Style



This 21st century take on the Lazy Susan makes corner cupboards so much more accessible

- Corner solution for cabinets with two opening doors
- Steel baskets powder coated in contemporary lava grey
- No central column, freeing up more storage space so ideal for bulkier items
- Virtually invisible mechanics for aesthetic appeal
- Flexible height adjustment for shelves, independent of carcass heights
- Great for retrofitting
- Shelves rotate independently of each other
- Options for 800mm and 900mm corner cabinets
- 28kg carrying capacity per shelf



Item Code	Description	Cab	Min W	Min H	Min D
VS231	VS COR Wheel Pro, 2 x 3/4 Shelf, Planero Style	800	745	610	680
VS232	VS COR Wheel Pro, 2 x 3/4 Shelf, Planero Style	900	835	610	760

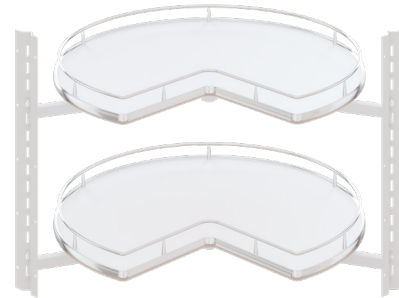




## VS COR Wheel Pro in Premea Style

The Lazy Susan never looked so good! VS COR Wheel Pro 'turns' your corner cabinet into a highly accessible storage area.

- Innovative design with no central column means 20% more storage space on shelves
- Virtually invisible internal mechanisms for aesthetic appeal
- Available for cabinet widths 800 and 900mm
- Height adjustment shelves allow set up just as you want it
- Shelves rotate independently of each other
- Ideal for retrofitting
- Load capacity: 28kg per shelf
- Model with 1 shelf ideal for installation under corner sinks or where there is already a fixed corner shelf



Item Code	Description	Cab	Min W	Min H	Min D
VSRM.80.2	VS COR Wheel Pro, 2 Shelf, Premea Style	800	745	610	680
VSRM.90.1	VS COR Wheel Pro, 1 Shelf, Premea Style	900	835	210	760
VSRM.90.2	VS COR Wheel Pro, 2 Shelf, Premea Style	900	835	610	760

VAUTH  
SAGEL



The corner solution for cabinets with two opening doors

Easy to retrofit into existing cabinets and looks great!



Photo courtesy of Ace Kitchens & Laminates, Upper Hutt



## VS COR Spin 71

Innovative design with doors attaching to the unit and retracting with it when you need access to your corner cabinet

- 3D door adjustment (height, sides, depth) for a perfect fit
- Integrated, individually adjustable rotation and closing dampers for outstanding movement and closing
- Telescopic tube allows for different cabinet heights
- 3/4 circular shelves in solid base or plastic options
- 20kg carrying capacity per shelf
- Order mechanism only for your cabinet, or
- Available as a complete unit installed in a NZ-made rounded back cabinet with benchtop support to back corner; just add doors



Item Code	Description	Cab	Min H	Min D
VS90.PC.72	VS COR Spin 71, Installed in Cabinet, Plastic Trays	900	720	900
VS90.P	VS COR Spin 71, Mechanism Only, Plastic Trays	900	632	900
VS90.SC.72	VS COR Spin 71, Installed in Cabinet, Solid Base Trays	900	720	900
VS90.S	VS COR Spin 71, Mechanism Only, Solid Base Trays	900	632	900



Made for corners with a hinged two-part door



Plastic trays

Solid base trays





## Vauth-Sagel Underbench Storage

When it comes to base cabinets, Vauth-Sagel offer several versatile models; pull out baskets, side mounted units, narrow cabinet options and even pull out tea towel rails. These units mean you're able to use the full depth of the cabinet and yet keep everything readily accessible.

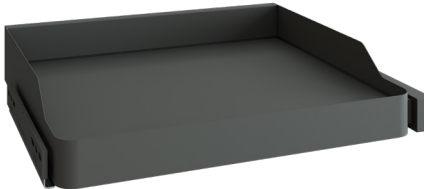


# VS SUB Basket in Planero Style



Convenient pull out trays — great behind a door, yet good looking so you can also install them with an exposed front

- Pull out shelf with sides for base cabinets and cupboards
- Baskets in flat steel powder coated in contemporary lava grey colour
- High quality full extension European runners
- Soft close runners with integrated shock absorption
- Load capacity 20kg per basket
- Available for cabinet widths 400mm, 450mm, 500mm, 600mm
- Minimum internal cabinet depth 515mm



Item Code	Description	Cab	Min W (hinged)	Min W (open)	Min H*	Min D
VS601	VS SUB Basket, Planero Style	400	363	338	160	515
VS602	VS SUB Basket, Planero Style	450	413	388	160	515
VS603	VS SUB Basket, Planero Style	500	463	438	160	515
VS604	VS SUB Basket, Planero Style	600	563	538	160	515

1 unit = 1 basket and runner pair (pantry image at far right shows 5 units, main image shows 2 units)

\*Installation height per unit, with runner



A set includes one basket and one pair of runners (this image shows two sets)

"I am really impressed with the speedy and exceptional customer service from FIT NZ. I will definitely be insisting our next kitchen has FIT NZ products."

**Andy Sowden**  
Homeowner, Auckland



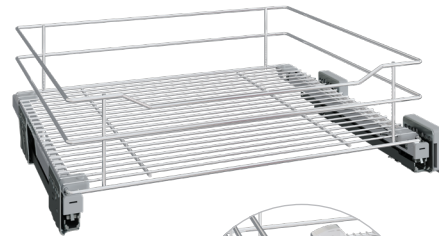
Multiple VS SUB Basket units installed as attractive and accessible pantry storage



## VS SUB Basket in Saphir Style

Practical, robust and a great way to keep organised in kitchens, laundries, play rooms, craft areas and more!

- Full extension pull-out on quality European drawer slides for great access to basket contents
- Soft close for easy use and low noise level
- Supplied ready to fit behind a hinged door
- Can also be adapted to suit fixed drawer style front or leave exposed as a feature
- With 3D front adjustment for a perfect fit
- Each set includes 1 basket and 1 set of European high quality drawer runners (each image shows 2 units)
- Available for cabinet widths of 400mm, 450mm, 500mm, 600mm, 800mm and 900mm
- Load capacity: 30kg per drawer



VAUTH  
SAGEL

Item Code	Description	Cab	W (hinged)*	W (fixed)+	Min D
VSWD.40.S	VS SUB Basket, Saphir Style	400	363	338	515
VSWD.45.S	VS SUB Basket, Saphir Style	450	413	388	515
VSWD.50.S	VS SUB Basket, Saphir Style	500	463	438	515
VSWD.60.S	VS SUB Basket, Saphir Style	600	563	538	515
VSWD.80.S	VS SUB Basket, Saphir Style	800	738	688	515
VSWD.90.S	VS SUB Basket, Saphir Style	900	838	788	515

VSWD.FMK Front Mounting Bracket Set  
1LH and 1RH to convert to fixed front unit

\*Actual basket  
dimensions

+ Minimum  
internal without  
25mm spacer



A set includes one basket and one pair of runners  
(this image shows two sets)

"The team at FIT are fantastic and bend over backwards to 'fit' your needs. Always great quality products and the service and communication is on point."

**Ross Herriot**  
Highland Carpentry & Joinery  
Taupo



Fixed drawer front  
(order bracket set separately)



## VS SUB Side in Planero Style

Brilliant for creating efficient 'go-to' spaces: oils and condiments near the cooktop, coffee and breakfast station, kids' snack spot, baking supply zone

- Attractive and durable powder coated baskets in contemporary lava grey
- Height-variable installation of the baskets with secure locking device
- Universal unit; frames can be used on either left or right side
- 3D front adjustment for a perfect fit
- Full extension pull-out with soft-close
- Additional front stabilisation
- Load capacity: 20kg
- With damping for quiet opening and closing
- Options for cabinets 200mm and 300mm wide

 VAUTH  
SAGEL



Item Code	Description	Cab	Min W	Min H	Min D
VS501	VS SUB Side, 2 Planero Baskets	200	168	619	495
VS502	VS SUB Side, 2 Planero Baskets	300	268	619	495

*"This company, management and staff are dedicated to deliver the best products and service. You need to look no further, FIT does fit the bill."*

**George Hurren**  
*Personalised Kitchens & Joinery  
Picton*



Photo courtesy of Steadfast Joinery, Dunedin



## VS SUB Side in Premea Style

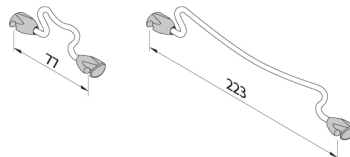
With 4 width options, the VS SUB Side is ideal for creating a convenient task station. Cereal station? Cocktail cabinet? Why not install two and have both!

- Full extension pull out for excellent access to contents
- Integrated soft-close damping for quiet opening and closing
- Available for cabinet widths of 150mm, 200mm, 300mm, 400mm
- Height-variable installation of baskets for a set up to suit your needs
- Can be mounted on left hand or right hand side
- Front stabilisation for secure use
- 3D front adjustment for a perfect fit
- Load capacity: 20kg
- Extra basket sets available separately
- Solid base baskets with chromed wire rails



**VAUTH  
SAGEL**

Item Code	Description	Cab	Min W	Min H	Min D
VSM.150.P	VS SUB Side, 2 Premea Baskets	150	118	615	495
VSM.200.P	VS SUB Side, 2 Premea Baskets	200	168	615	495
VSM.300.P	VS SUB Side, 2 Premea Baskets	300	268	615	495
VSM.400.P	VS SUB Side, 2 Premea Baskets	400	368	615	495
VSM.150.D	Bottle Divider for 150mm Side Mounted Pull Out				
VSM.200.D	Bottle Divider for 200mm Side Mounted Pull Out				
VSM.300.D	Bottle Divider for 300mm Side Mounted Pull Out				



Full extension pull out for excellent access to contents



Photo courtesy of Modern Kitchens, Tauranga



# VS SUB Slim in Planero Style



Think a 150mm space is too narrow to be useful? Think again!

- Two attractive and durable powder coated baskets in contemporary lava grey
- Versatile unit suits many purposes
- 3D front adjustment for a perfect fit
- Load capacity: 12kg
- With damping for quiet opening and closing
- For cabinet widths of 150mm
- Mounts on right, access from both sides



Item Code	Description	Cab	Min W	Min H	Min D
VS503	VS SUB Slim Storage Cargo, 2 Planero Baskets	150	118	530	495





# VS SUB Slim



Use even the narrowest of cabinet spaces for convenient oil and condiment access, pull out tea towel rails, or even baking tray/chopping board storage

- Standard unit set up with two fixed shelves; ideal for bottles and jars
- Tea Towel/Hand Towel Holder and Baking Tray/Chopping Board Holder models also available
- Integrated damping for quiet opening and closing
- Requires a cabinet just 150mm wide
- 3D front adjustment for a perfect fit
- Load capacity: 12kg

Item Code	Description	Cab	Min W	Min H	Min D
VSPU.150.PB	VS SUB Slim Storage Cargo, 2 Baskets	150	118	530	495
VSPU.150.BT	VS SUB Slim Baking Tray/Chopping Board Storage	150	118	530	495
VSPU.150.HT	VS SUB Slim Tea Towel Storage	150	118	530	495
VSPU.150.DIV	Bottle Divider for K150 Pull Out Bottle Storage Cargo				



Standard



Tea Towel



Baking Tray/  
Chopping Board



Standard Unit

Now you can use even the narrowest of cabinet spaces!



Tea Towel



Baking Tray/Chopping Board



# VS ADD Towel



No more soggy tea towels on the bench!

- 3 rail pull out aluminium tea towel rail
- Top mounted (may side mount by swivelling rails)

Item Code	Description	Min W	Min H	Min D
GATR3	VS ADD Towel	62*	100	466

\*if unit is side mounted, allow 140mm for width





## VS ADD Iron Drawer Pull Out Ironing Board



The perfect extendable ironing board storage solution!

- Installed into a cabinet drawer
- Folds out of drawer space, lifts up and then rests against the counter top
- Conserves space without compromising practicality, quality or comfort
- Ironing board dimensions: 950mm x 300mm
- High quality, stable, solid construction
- Includes a heat-resistant fabric ironing board cover
- Replacement covers available

Item Code	Description	Cab	H	Min D
VSIB.D	VS ADD Iron Drawer Pull Out Ironing Board	400/500	120	510
VSIC	Ironing Board Cover			



Photo courtesy of The Custom Space, Nelson





## Need some reassurance about Fit's service and product quality? You don't need to take our word for it!

"We have been using FIT products in our custom-made kitchens for many years. The products are of high quality, and we always receive excellent customer service from the FIT team. We would have no hesitation in recommending their products."

**Kiwi Kitchens, Christchurch**

"FIT staff are always friendly, knowledgeable, and willing to help. They provide a great range of products at competitive prices. They stand by their products and follow up with great customer service, ongoing support and regular information and product updates that I can share with my clients."

**Karen Warner, Perfect Order Kitchen Design, Wellington**

"FIT, you guys have been amazing! Your product arrives to us quickly and well packaged. And if we ever need any help our rep is fantastic to deal with. We very rarely have trouble getting stock. And if we do the communication is really good. 10/10."

**Rebecca, Handcraft Kitchens & Joinery, Opawa, Christchurch**

"I love dealing with FIT and would encourage anyone who hasn't tried them already to give them a go. They have a huge range of products at a good price and have prompt delivery. We never have any issues with the products and will continue to use them in our joinery. We couldn't be happier with the relationship we have with FIT."

**Jennings Joinery, Christchurch**

"FIT have always provided our company with excellent service. Their sales agents are knowledgeable and always respond to any questions quickly. Our company always spec FIT products before others. They offer value and service. We look forward to maintaining our working relationship for the years to come."

**Hunter Anderson Architecture, Christchurch**

"I've used FIT for many years now. It's always great service, but the best measure of how good a business is is how they react when there's an issue or problem. On the rare occasion we've had one, it's been sorted out immediately. There are no excuses or blame, just a fix."

**The Villa Wardrobe Company, Helensville, Auckland**

"Well run and supportive business that takes pride in focusing on relationships. Communication prompt and clear, and always a can-do team!"

**State of Ply, Mount Maunganui**

"What a fabulous company to deal with, great range of top quality products and constantly keeping ahead of the game."

**Tony Cooper, Cooper Furniture & Joinery, Stokes Valley, Lower Hutt**

"FIT are very easy to deal with. Their sales people are well trained in all their products and helpful in finding the right product for our needs. A great range of products."

**Andy Sowden, Homeowner, Auckland**

"FIT is a fundamental supplier to our business. Their products are very high quality and offer great solutions for our needs. Their service is second to none."

**Matakana Kitchens & Joinery**

"Great company ethics. Great staff and management. Great products backed up by a great service. You couldn't ask for more."

**George Hurren, Personalised Kitchens & Joinery, Picton**

"I have been using FIT products for all of my career and I just love them. Easy to spec and install. Great customer service throughout the process and really innovative with coming up with new and interesting products to make clients' lives easier."

**Sophie McDougall-Wenn, Stella Design Co, Whanganui**

"The service that I have received from your company, when I had a small issue with one of my kitchen drawers, was par excellence. The response was prompt and the information given expert and effective."

**Ian Rainey, Homeowner, Auckland**

"Great Service. Great Products. Great Delivery Times. One of the best suppliers out there."

**Dream Doors, North Shore, Auckland**

"We have been using Fit for many years now. The customer service is the best in the industry. All of the Fit team have a passion for the product. They will go the extra mile to make sure we, the client, are getting the products we need when we need them."

**Brendon Dunn, Contrast Interiors, Henderson, Auckland**





## A Family Run Consortium

More than 50 years in the service of our customers



Vauth-Sagel looks back on more than 50 successful years in business.

For all this time we have considered ourselves as close partners of industry. This view of ourselves is based on our huge development and material expertise, developed over the decades, which we have always placed at the disposal of our global clients. As a family firm managed by its owners, we are well-placed to make long-term strategic business plans and focused investments, particularly in research and development. This policy, together with production in the heart of Germany, guarantees the planning security of a partner who consistently operates at the highest level in terms of processes and quality.



## Made in Germany

Dependable quality



Vauth-Sagel has been developing and finishing its products at its manufacturing base in Germany for more than 50 years. Thanks to our expertise and attention to detail, we are able to create top-quality, innovative products, and have thus become an important partner in the national and international furniture industry.

The German guarantee of quality forms the basis of the Vauth-Sagel quality label.

- EasyFit user-friendly assembly
- FSC® certification for timber used
- International environmental management standard
- ISO 14001
- Safety guarantee (LGA-tested)

## Ecology and Sustainability

The basis of our decision-making for over five decades

Our long-term success is based not only on the targeted direction of our product development processes or even on our forward-looking corporate business policies, but also on a conscientious approach to how we obtain the necessary resources and respect the environment.

Quality, safety at work and environmental consideration together with efficiency and the responsible use of energy are some of our principal corporate aims and are also the personal responsibility of each and every employee. Our responsibility for the environment is firmly anchored as an overarching principle in the Vauth-Sagel corporate image.

Our focus is on:

- Active employee protection
- Reasonable use of materials and energy
- Minimal environmental pollution and damage
- Sustainable product development





## Notes

---

---

---

---

---

---

---

---

---

---

---

---

---

---

---

---

---

---

---

---

---

---

---

---

---

---

---

---

---

## Notes

---

---

---

---

---

---

---

---

---

---

---

---

---

---

---

---

---

---

---

---

---

---

---

---

---

---

---

---

---



# Notes

## Have you seen all of Fit's storage solution catalogues?

Our collection of six catalogues covers our comprehensive range of storage solutions for kitchen, laundry, work-from-home spaces and more!

These catalogues provide in-use imagery alongside detailed information about specifications and variants available. You'll find lots of detail to assist your decision making process, and we're here to help if you need to know more!

Ask your designer, kitchen maker or cabinet maker for other Fit catalogues, or contact us directly and we'll be happy to send them to you; email [info@fit-nz.co.nz](mailto:info@fit-nz.co.nz) or phone 0800 852 258. Or you can download them from our Resource Download page at [www.fit-nz.co.nz](http://www.fit-nz.co.nz)







ENHANCING LIVING  
SPACES TOGETHER

### Office and Distribution

22 Hood Street  
Wellsford 0900  
0800 852 258  
info@fit-nz.co.nz  
www.fit-nz.co.nz

### Christchurch Distribution and Showroom

4 Morse Road  
Wigram  
Christchurch 8042

 Fit NZ

 fitnzhomestorage

 fitnzhomestorage

 FitNewZealand

 houzz

