

Kitchen & Cabinet Lighting




DOMUS LINE


ENHANCING LIVING
SPACES TOGETHER

**Stylish design.
Cutting edge
technology. Quality
manufacturing.
Energy efficient.**

Fit are proud to be the New Zealand distributor of the innovative and beautiful Domus Line LED lighting range designed in Italy. Domus Line for LED strip lighting, downlights, profiles for LED strips, sensors and touch switches, along with all necessary connectors, cables, distributor blocks and drivers.

View the Domus Line range on our website.

www.fit-nz.co.nz



Kitchen & Cabinet Lighting



LED Strip 6-11



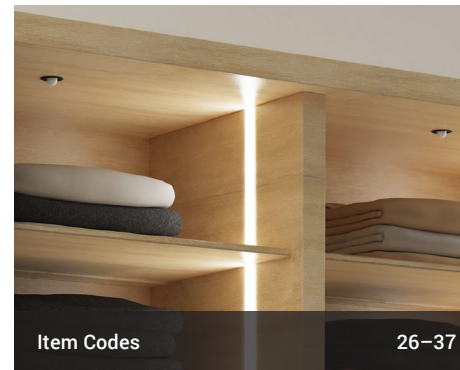
LED Profiles 12-17



LED Downlights 18-21



Sensors & Switches 22-24



Item Codes 26-37

Welcome to Fit's Kitchen & Cabinet Lighting catalogue

This catalogue includes detailed product information and many images of units in place to assist with your decision making process. We'd be delighted to answer any additional questions you may have.

For further information or to place an order, talk to your designer, kitchen maker, cabinet maker, or contact us directly via our website.

**www.fit-nz.co.nz
info@fit-nz.co.nz
0800 852 258**

Front cover:
Project by Above Board Design & Cabinetry, Tauranga
Photo by Kathleen of Rex Studio Photography

Inside cover:
Project by Beaver Kitchens, Whakatāne

Kitchen Lighting with LED

As the kitchen is both a social environment and a workspace, you want a mixture of ambient and task lighting. Ambient lights will set the mood with a soft glow, while task lights will focus stronger light over key work spaces such as an island or countertop. The key is balancing the two sources so your kitchen is as warm and inviting as it is functional.



Photo courtesy of Beaver Kitchens, Whakatāne

Ambient Lighting

Mood lighting allows you to change the ambience of the kitchen from a practical preparation zone to a relaxed entertaining space. Strip lighting around toe-kicks on an island unit or breakfast bar gives the illusion of floating furniture and an impressive finishing touch to your kitchen. Or, if you have an interesting feature that you'd like to highlight, consider accent lighting that can be used to focus on a particular area or design element in the room.



Task Lighting

Task lighting is important to illuminate your most used work spaces such as bench tops and islands. These lights should be considerably brighter than elsewhere in the room. Often times, this will require lighting fixtures that can be installed under wall cabinets, beneath shelving or on the wall behind the work surface.

Darker spaces such as pantries can also benefit from additional lighting, illuminating the darker corners and making it easier to find items. Automatic sensor lighting is a good option for these areas with lights turning on and off as the door opens and closes.



Layering Light Sources

The key to your kitchen lighting is layering a number of different sources of light. Multiple light sources lends a three dimensional feel and helps you to create the mood you want, with each source able to be controlled individually so that the scheme can create anything from the feeling of bright daylight to an intimate atmosphere over dinner.



Photo courtesy of Kitchen Studio, Palmerston North

Why LED?

The light-emitting diode (LED) is one of today's most energy-efficient and rapidly developing lighting technologies. Quality LED light bulbs last longer, are more durable, and offer comparable or better light quality than other types of lighting.

Energy Savings

LED lights use up to 80% less energy than standard incandescent light bulbs*. With 13% of a typical New Zealand family home power bill spent on lighting#, this can amount to significant savings.

Long Lifetime

LED lights will last for at least 15,000 hours. At 3 hours of use per day, 365 days a year, this could mean up to 13+ years before you will need to replace your lights. So LED lights are ideal for hard to reach places, where replacing them can be difficult.

Low Heat Output

LED lights generate very little heat. This means they can be recessed into furniture, they can be used to light artwork without damage, plus they stay cool to touch even after hours of use.

Durability

LED lights have a robust design, making them far sturdier than traditional light bulbs. LEDs are able to withstand shock, vibration and extreme temperature.

Instant Light

LED lights work at full output instantaneously; no waiting for lights to warm up or slowly brighten.

A Word for the Wise

You'll find a huge range of LED lighting available in New Zealand, at a wide range of price points. At FIT, we urge you to ensure that the options you're considering are approved to the relevant Australia/New Zealand standards before you purchase them. All FIT's Domus Line LED lighting products carry these approvals.

*www.consumer.org.nz/articles/led-bulb-buying-guide

#nzcompare.com, 2020

Warm White or Natural White?

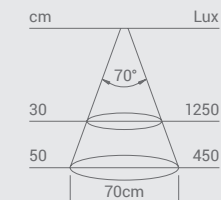
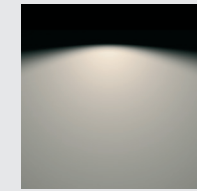
Choosing the correct light colour is an important process as it helps to create the overall look and feel of your room. The Domus Line collection is available in two light colours: Natural White and Warm White. The choice between these options is a matter of your own taste and the style of your room.

Natural White

Natural White light is intended to represent the typical light that comes from windows on a clear spring day at noon.

For those who prefer contemporary style rooms where attention to detail and definition is required, Natural White light options are a great choice.

Colour Appearance	Natural White
Colour Temperature	4300 Kelvin
Light Output	390 Lumens
Luminous Efficacy	130 lm/W
Colour Rendering Index	Ra ≥ 80



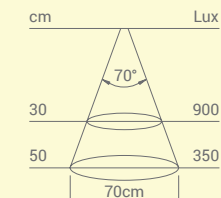
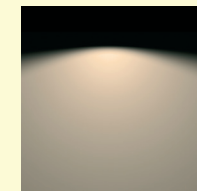
Natural White information for 24Vdc Smally XS Plus Downlights

Warm White

Warm White light is suitable for rooms with warm, rich colours where a soft, easy and relaxing style is preferred.

A warmer looking room, for example a traditional kitchen with wooden cabinetry, or a living room with a lot of wood or classically upholstered furniture, will benefit from the Warm White light option.

Colour Appearance	Warm White
Colour Temperature	2700 Kelvin
Light Output	360 Lumens
Luminous Efficacy	120 lm/W
Colour Rendering Index	Ra ≥ 80



Warm White information for 24Vdc Smally XS Plus Downlights

FLEXILED AT6



About Flexyled AT6

Flexyled AT6 is a very flexible, linear 6mm x 6mm LED strip ideal for both recessed and surface installation.

A technologically advanced milky effect silicone casing gives AT6 an opalescent finish, creating a natural, seamless diffused light strip with no dots.

AT6 requires no aluminium profile or trim, creating a minimalistic flush finish ideal for use behind fixed shelving or drawer runner fixings.

Its IP44 waterproof rating makes it a versatile option for kitchens and utility rooms.

Flexyled AT6 is able to curve around corners with a minimum 25mm radius, making it a superb perimeter luminaire for shelves, cabinets, furniture and more.

Product

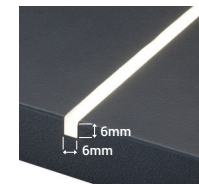


Flexyled AT6 (24Vdc)

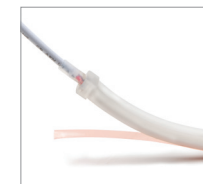
Natural White or Warm White

2000mm, 3000mm or 6000mm lengths with double power cords

Installation Method



Routed groove*
6mm x 6mm OR...



Surface mount with
adhesive strip OR...



Surface mount with
screw & clips

*Press fit; no glue/adhesive needed

FLEXYLED SE H4-24



About Flexyled SE H4-24

Flexyled SE-H4-24 is a flexible, high emission, no dotted effect 4mm LED strip ideal for recessed, profile and surface installation.

This contemporary option requires no aluminium profile or trim and can be press-fitted without glue or adhesives into curved milled grooves or rings (minimum radius 15mm), making it a superb choice for decorative lighting installations.

When recessed, Flexyled SE H4-24 presents an attractive, perfectly flush surface ideal for use in cabinets, drawers and cupboards, under shelves and in custom furniture.

Also able to be fitted with toekick clips, SE H4-24 is an excellent system for toekick lighting, with no pre-milling or prep required.

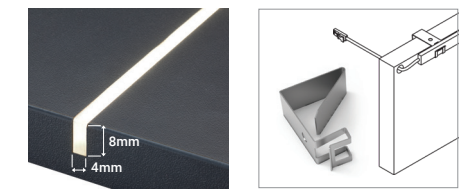
With a waterproof rating of IP44, SE H4-24 suits use in kitchens and utility rooms.

Product



Flexyled SE H4 (24Vdc)
 Natural White or Warm White
 1000mm length with single power cord
 2000mm or 3000mm lengths with double power cords

Installation Method



Routed groove* 4mm x 8mm **OR**... Surface mount with screws & clips **OR**... Integrate into aluminium profiles
 *Press fit; no glue/adhesive needed

Detailed product information on page 27

FLEXYLED HE6B PRO & SHE6B PRO



About Flexyled HE6B Pro & SHE6B Pro

Flexyled HE6B and Flexyled SHE6B are flexible pre-wired LED strip options that are just 6mm wide, with a very slim clip on the cable.

Both are supplied with a high adherence 3M adhesive base so they may be surface mounted or integrated into profiles with a removable diffuser.

Both are IP20 rated and are designed with reinforced soldered power supply cable terminals to ensure good solidity.

The Difference?

HE6B (High Emission) has 120 LEDs/m and may be divided every 50mm.

SHE6B (Super High Emission) has 180 LEDs/m and may be divided every 33mm. It is ideal when you require stronger light or are integrating into a profile with a dark diffuser such as our Domus Line Apex Dark.

Compatible with Nexus, Apex Dark (leave adhesive on) and any CH-suitable extrusion.

Product



HE6B (24Vdc) and SHE6B (24Vdc)

Natural White or Warm White 10m rolls
2m and 3m lengths pre-wired at one end
5m lengths pre-wired at both ends

Installation Method

Surface mount via adhesive strip (included)

OR...

Integrate into profile with removable diffuser, leaving the adhesive on

TYNN



About Tynn

Tynn is a stylish anodised aluminium or matt black profile designed for very easy surface mounting under shelves and cabinets.

The design of this sleek profile, inclined at 20°, guarantees good light projection onto work surface or shelf contents.

Tynn integrates with minimalistic Flexyled SE H4, Domus Line's flexible side-emitting linear LED strip.

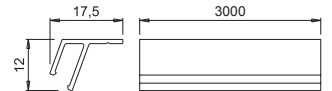
Tynn is supplied in 3000mm lengths and matching fixings are available for a consistent look.

Product

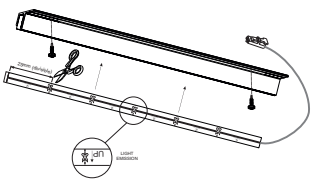


Tynn Profile
Anodised Aluminium or Matt Black
3m length
Order SE H4 LED strip separately

Installation Method



Surface mount with screws
(supplied)



APEX DARK



About Apex Dark

Apex Dark is a standalone polymer extrusion that combines the functionality of a light with the aesthetics of a refined dark screen finish.

The Apex Dark diffuser is a multi-layered co-extrusion, which guarantees a dark finish when the luminaire is switched off, and a sophisticated luminous effect with no dots when the luminaire is switched on.

Apex Dark is designed for recessed installation in a blind or through milled groove and is recommended for use under shelves in wardrobes and cupboards.

Use Domus Line HE6B Pro or SHE6B Pro LED strip in Apex Dark.

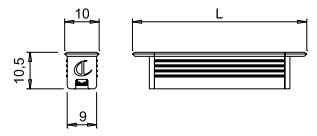
Product



Apex Dark On Apex Dark Off Apex Dark Cable Detail
(End caps designed to ensure correct light source and cable position)

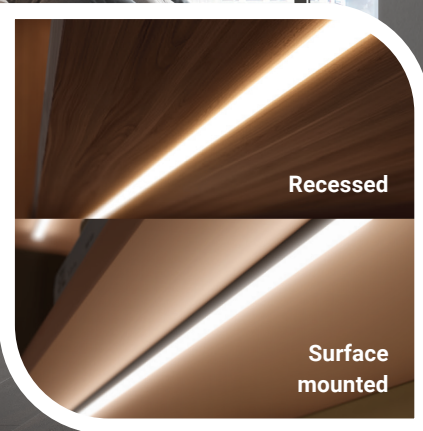
Apex Dark Profile & LED Strip
3m length
Recessed installation
Order power source separately

Installation Method



Recessed
Blind or through milled groove 9mm wide and 10.5mm deep
Profile surface protrudes 0.85-1.0mm from groove
With 0.7mm chamfer at 45° protrusion may be reduced to 0.4-0.6 mm

NEXUS



Recessed

Surface mounted

About Nexus

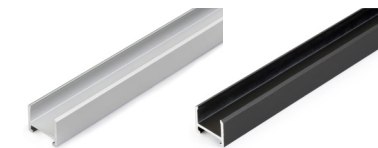
Nexus is a micro profile designed to achieve linear lighting solutions customised 'to the millimetre' for narrow, shallow recessed use and also for surface applications.

Nexus comprises a universal profile in an anodised aluminium or matt black finish, plus distinct opalescent diffusers and installation accessories for either recessed or surface installation.

Diffusers couple with profiles to give a solid attachment and a perfect fit, yet are easy to disassemble if required.

Domus Line HE6B Pro or SHE6B Pro LED strip may be used in the Nexus profile collection. These strips have a very slim clip on the cable to suit the narrow Nexus profile.

Product



Nexus Profile

Anodised Aluminium or Matt Black
3m length

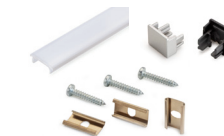
Recessed or surface mounted

Order separately:

- Appropriate installation accessories
- HE6B Pro or SHE6B Pro LED strip

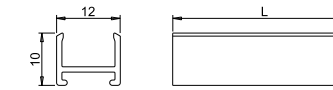


Recessed:
Diffuser, end caps and clips

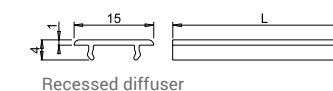


Surface mounted:
Diffuser, end caps and clips

Installation Method



Profile



Recessed diffuser



Surface mount diffuser

Recessed

Milled groove 10.5 x 12.5mm, with Nexus end caps and clips for recessed installation

Surface mounted

With Nexus end caps and clips for surface mounted installation

HOLL



About Holl

Holl is a patented luminaire with a unique slim and circular perimeter of light integrated in a support installed in a blind routed ring groove.

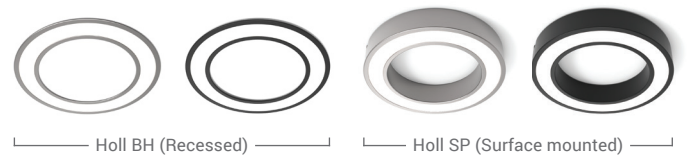
Holl is an excellent option for task lighting or to provide a highlight or focus.

If you're seeking a mix of downlight and strip lighting, Holl's attractive ring effect pairs beautifully with Domus Line's super flexible, slim AT6 and SE H4 LED strip options.

Available in steel colour and black finishes, in both recessed (BH) and surface mounted (SP) models, there's a Holl to suit.

Plus, if you prefer, you can add a clip in cap (TH) so the central portion sits flush with the top of the light ring (see page 32).

Product



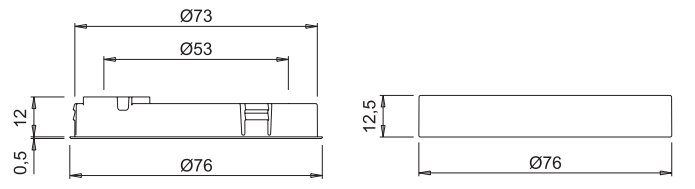
Holl BH and SP (24Vdc)

Steel Colour or Black

4.5W

Supplied with 2000mm power cord output and Micro24 connector

Installation Method



BH (Recessed)

Hole for BH: Ø73mm/Ø53mm
Hole for BH with TH Cap: Ø73mm

SP (Surface mounted)

SMALLY XS PLUS



About Smally XS Plus

Smally XS Plus is an everyday, easy to use downlight with a refined look. It's designed for recessed installation in a 12mm deep, 57mm diameter hole.

With a patented innovative 'plug and play' system, it's easy to disconnect and reconnect.

Smally XS Plus features high performance SMD LED modules with no dot effect technology to ensure a uniform, diffuse light projection.

Available in a black or steel colour finish and a natural or warm white light colour.

Product



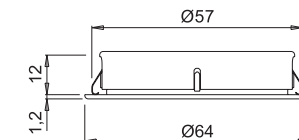
Smally XS Plus (24Vdc)

Steel Colour or Black

3.0W

Supplied with 2000mm power cord output with Micro24 connector

Installation Method



Recessed
Through and blind holes



TOUCH ME 2.0 Touch Dimmer Switch Aluminium Colour or Black

An electronic touch switch designed for recessed installation.

Use the Touch Me 2.0 Dimmable Touch Switch to turn lights off and on with a quick touch or, with a longer touch, use it as a dimmer to control brightness.

When maximum light intensity is reached, a short flash will let you know plus that level will be memorised until you reset it (level memory function).



CAPSENS 2.0 Concealed Touch Dimmer Switch Aluminium Colour

Concealed electronic capacitive sensor switch designed for recessed installation behind most non-metallic materials.

With an activation area of 50mm, contact with your hand on the surface below which Capsens is installed, will turn lights on or off.

Longer contact activates the dimmer function for light intensity, with a short flash showing maximum level has been reached.

Capsens retains that level in memory until you reset it.

Effective behind wood up to 30mm thick, glass up to 12mm thick and plastic up to 20mm thick.



MINI TOUCH Capacitive Dimmable Touch Switch Aluminium Colour

An electronic touch switch designed for recessed installation.

Turn lights on or off with a quick touch.

Brightness may be adjusted with a longer touch (dimmer function) and is then stored until the next adjustment (memory function).

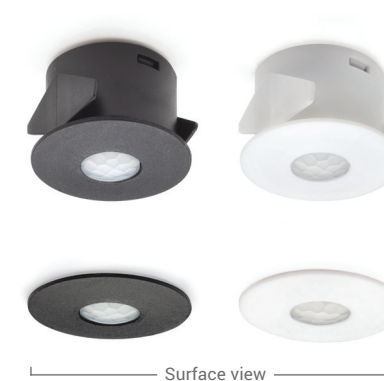
Aluminium colour finish.

PIR 2.0 FW Passive Infrared Movement Sensor for Doors Black or White

PIR 2.0 is a sensor installed on the back of a door that activates when there are people within the detection radius.

After approximately 30 seconds with no detection, PIR 2.0 automatically switches off the connected luminaires even if the door is open, making it perfect for wardrobes and other cupboard areas.

For recessed installation, with support spacers available if you wish to surface mount (see below).



PIR 2.0 FW Support Spacers for Surface Mounting

If you wish your PIR 2.0 FW sensors to be surface mounted rather than recessed, these support spacers allow just that!



CALL ME V17 Receiver & Remote Sensor with Dimming Function

Wireless switch for embedded installation in panels which suits applications needing remote activation; think bedrooms, kitchens and living areas.

On/off and light level (dimmer function) can be controlled with Call Me from a distance of up to 15 metres.

Unit operates via radio frequency and comes complete with receiver unit, distributor block, 2m power cable, remote control and Micro12 and Micro24 connectors.



IR 2.0 FC Dual Function Electronic Proximity Switch

IR 2.0 FC may be used as a door switch or as a non-contact on/off switch. It may be surface mounted or recessed.

By pressing the microswitch for 3 seconds, you can also transform IR2.0 FC into a dimmer switch.

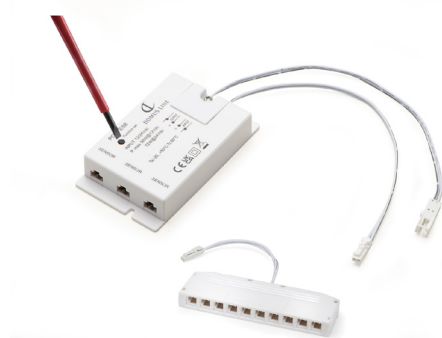


POLY: Multiple Sensor Electronic Control System

POLY is a multiple sensor electronic control system for LED luminaires.

The electronic control module, only 18 mm thick, is connected between the power supply and the lamps (both 12Vdc and 24Vdc), and can host up to 3 sensors of the various Domus Line models available: infra-red proximity sensors and pyrolytic presence sensors.

The control module integrates a set-up button with which the function can be modified at any time – from back-of-door sensor to switch.



IR Sensor shown with surface mount support

POLY: PIR Motion Sensor

The PIR sensor for POLY switches on when someone moves inside the detection field and, after approximately 180 seconds with no movement, automatically switches off the luminaires connected to the control module, even if the door remains open.

POLY: IR Door Back Proximity Sensor or Dimmable Touch Switch

The IR sensor for POLY – in limit-switch mode – turns on the luminaires when the door is opened. With the on-off and dimmer set-up, the IR sensors are switched on and off and the brightness of the luminaires can be adjusted simply by moving a hand near the sensor. Recess installation or surface mount with use of support (included).



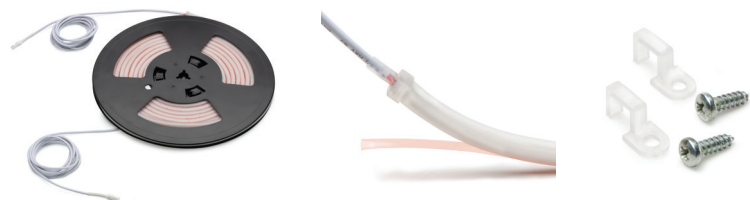
Project by Above Board Design & Cabinetry, Tauranga

Flexyled AT6

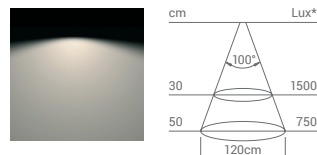


- 24Vdc
- 276 UHE LEDs per metre
- Minimum radius just 25mm
- Divisible at 21.7mm increments
- IP44 rated

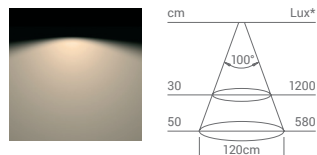
Item Code	Description	Watts	Length	Light Colour
DOM850	Flexyled AT6 – pre-wired with double power cord	10W/metre	2m	Natural White
DOM851	Flexyled AT6 – pre-wired with double power cord	10W/metre	3m	Natural White
DOM852	Flexyled AT6 – pre-wired with double power cord	10W/metre	6m	Natural White
DOM860	Flexyled AT6 – pre-wired with double power cord	10W/metre	2m	Warm White
DOM861	Flexyled AT6 – pre-wired with double power cord	10W/metre	3m	Warm White
DOM862	Flexyled AT6 – pre-wired with double power cord	10W/metre	6m	Warm White



Lighting Data



Colour Appearance **Natural White**
 Colour Temperature **4300 Kelvin**
 Luminous Efficacy **50 lm/W**
 Colour Rendering Index **Ra ≥ 90**



Colour Appearance **Warm White**
 Colour Temperature **2700 Kelvin**
 Luminous Efficacy **50 lm/W**
 Colour Rendering Index **Ra ≥ 90**

*Illuminance levels of model FLEXYLED AT6 1000mm



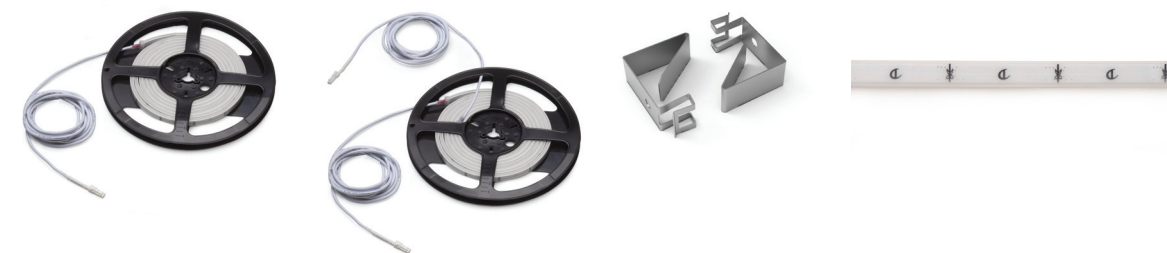
© Copyright 2023. All rights reserved. Specifications subject to change without notice.

Flexyled SE H4-24

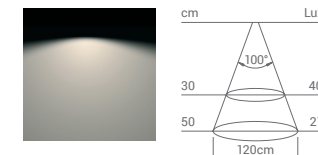


- 24Vdc
- 180 LEDs per metre
- Minimum radius just 15mm
- Divisible at 33.3mm increments
- IP44 rated

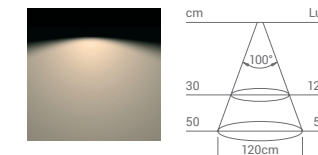
Item Code	Description	Watts	Length	Light Colour
DOM513	Flexyled SE H4-24 – pre-wired with single power cord	9.6W	1m	Natural White
DOM514	Flexyled SE H4-24 – pre-wired with double power cord	19.2W	2m	Natural White
DOM515	Flexyled SE H4-24 – pre-wired with double power cord	28.8W	3m	Natural White
DOM510	Flexyled SE H4-24 – pre-wired with single power cord	9.6W	1m	Warm White
DOM511	Flexyled SE H4-24 – pre-wired with double power cord	19.2W	2m	Warm White
DOM512	Flexyled SE H4-24 – pre-wired with double power cord	28.8W	3m	Warm White
DOM516	Fixing Clips for Toekick Mounting	–	–	–



Lighting Data



Colour Appearance **Natural White**
 Colour Temperature **4200 Kelvin**
 Luminous Efficacy **95 lm/W**
 Colour Rendering Index **Ra ≥ 90**



Colour Appearance **Warm White**
 Colour Temperature **3100 Kelvin**
 Luminous Efficacy **85 lm/W**
 Colour Rendering Index **Ra ≥ 90**

*Illuminance levels of model FLEXYLED SE H4-24 1000mm



© Copyright 2023. All rights reserved. Specifications subject to change without notice.

Flexyled HE6B

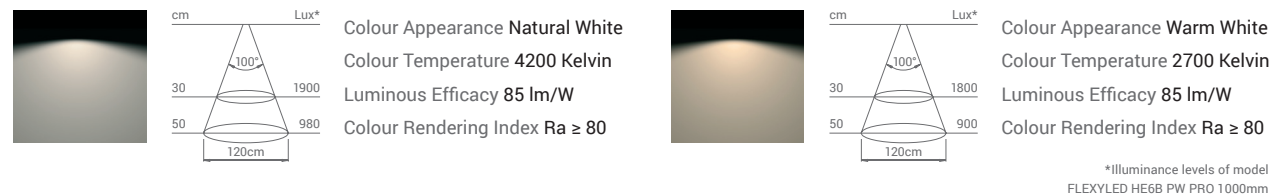


- 24Vdc
- 120 LEDs per metre
- Divisible at 50mm / 6 LEDs
- IP20 rated

Item Code	Description	Watts	Length	Light Colour
DOM681	Flexyled HE6B – pre-wired with single power cord	19.2W	2m	Natural White
DOM682	Flexyled HE6B – pre-wired with single power cord	28.8W	3m	Natural White
DOM683	Flexyled HE6B – pre-wired with double power cord	48W	5m	Natural White
DOM680	Flexyled HE6B	9.6W/metre	10m	Natural White
DOM685	Flexyled HE6B – pre-wired with single power cord	19.2W	2m	Warm White
DOM686	Flexyled HE6B – pre-wired with single power cord	28.8W	3m	Warm White
DOM687	Flexyled HE6B – pre-wired with double power cord	48W	5m	Warm White
DOM684	Flexyled HE6B	9.6W/metre	10m	Warm White
DOM842	Power Supply Cable for HE6B and SHE6B	–	2m	–



Lighting Data



Flexyled SHE6B

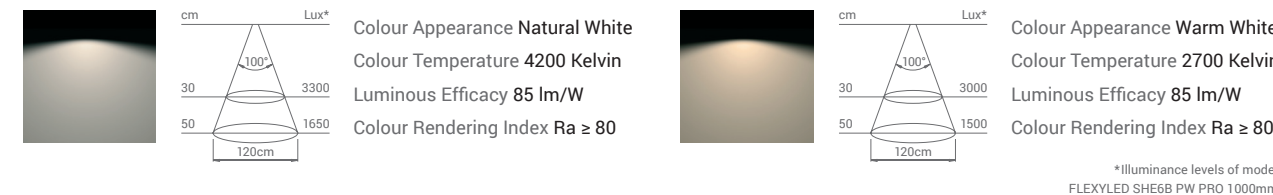


- 24Vdc
- 180 LEDs per metre
- Divisible at 33mm / 6 LEDs
- IP20 rated

Item Code	Description	Watts	Length	Light Colour
DOM671	Flexyled SHE6B – pre-wired with single power cord	28.8W	2m	Natural White
DOM672	Flexyled SHE6B – pre-wired with single power cord	43.2W	3m	Natural White
DOM673	Flexyled SHE6B – pre-wired with double power cord	72W	5m	Natural White
DOM670	Flexyled SHE6B	14.4W/metre	10m	Natural White
DOM675	Flexyled SHE6B – pre-wired with single power cord	28.8W	2m	Warm White
DOM676	Flexyled SHE6B – pre-wired with single power cord	43.2W	3m	Warm White
DOM677	Flexyled SHE6B – pre-wired with double power cord	72W	5m	Warm White
DOM674	Flexyled SHE6B	14.4W/metre	10m	Warm White
DOM842	Power Supply Cable for HE6B and SHE6B	–	2m	–



Lighting Data

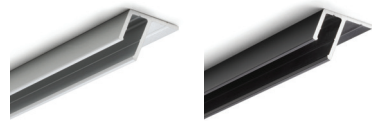


Tynn



- For use with Flexyled SE H4
- Surface installation
- Aluminium

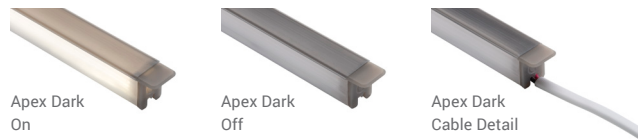
Item Code	Description	Length	Light Colour
DOM630	Tynn Profile	3m	Anodised Aluminium
DOM633	Fixing for DOM630	–	Chrome Plated
DOM631	Tynn Profile	3m	Matt Black
DOM632	Fixing for DOM631	–	Black



Apex Dark

- Standalone polymer extrusion with refined dark screen finish
- For use with HE6B Pro and SHE6B Pro
- Recessed installation
- 3m lengths

Item Code	Description	Installation	Length
DOM690	Apex Dark Profile	Recessed	3m
DOM691	Apex Dark End Caps	–	–

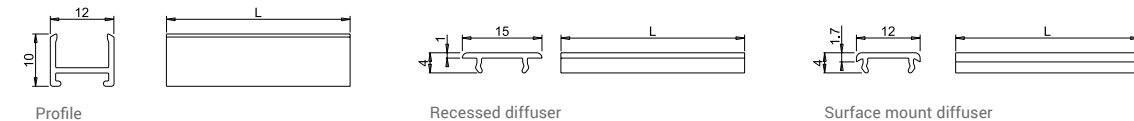


Nexus



- For use with HE6B Pro and SHE6B Pro
- Recessed or surface installation (select appropriate components)
- Anodised Aluminium or Matt Black
- 3m lengths

Item Code	Description	Installation	Length	Finish
DOM660	Nexus Profile Length	–	3m	Anodised Aluminium
DOM661	Nexus Profile Length	–	3m	Matt Black
DOM662	Nexus Diffuser	Recessed	–	–
DOM663	Nexus End Caps	Recessed	–	–
DOM664	Nexus Clips	Recessed	–	–
DOM665	Nexus Diffuser	Surface Mount	–	–
DOM666	Nexus End Caps	Surface Mount	–	Anodised Aluminium
DOM667	Nexus End Caps	Surface Mount	–	Matt Black
DOM668	Nexus Clips	Surface Mount	–	–



Holl



- 24Vdc
- 4.5W
- BH model: Recessed installation in hole Ø73mm/Ø53mm and just 12mm deep
- BH model with TH cap: Recessed installation in hole Ø73mm and just 12mm deep
- Or SP model for surface installation
- SMD LEDs with no dot technology
- Thermoplastic polymers, polycarbonate
- With 2000mm power cord and Micro 24 connector

Item Code	Description	Watts	Installation	Finish	Light Colour
DOM120	Holl BH Downlight	4.5W	Recessed	Steel Colour	Natural White
DOM121	Holl BH Downlight	4.5W	Recessed	Black Touch	Natural White
DOM122	Holl SP Downlight	4.5W	Surface	Steel Colour	Natural White
DOM123	Holl SP Downlight	4.5W	Surface	Black Touch	Natural White
DOM124	Holl BH Downlight	4.5W	Recessed	Steel Colour	Warm White
DOM125	Holl BH Downlight	4.5W	Recessed	Black Touch	Warm White
DOM126	Holl SP Downlight	4.5W	Surface	Steel Colour	Warm White
DOM127	Holl SP Downlight	4.5W	Surface	Black Touch	Warm White
DOM128	Cap for Holl LED Downlight	4.5W	—	Steel Colour	—
DOM129	Cap for Holl LED Downlight	4.5W	—	Black Touch	—



Lighting Data



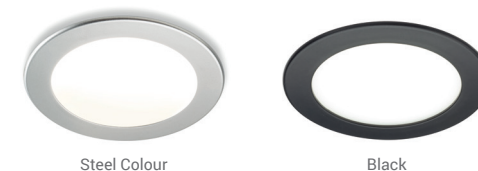
*Illuminance levels of model HOLL 4000 K



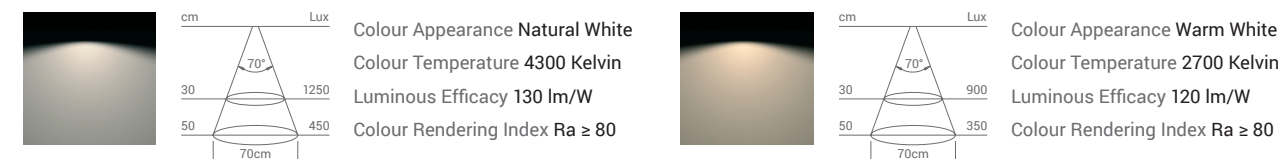
Smally XS Plus

- 24Vdc
- 3W
- Recessed installation in hole Ø57mm and just 12mm deep
- SMD LEDs with no dot technology
- Patented plug and play system for easy disconnection
- Thermoplastic polymer, PMMA
- With 2000mm power cord with Micro 24 connector

Item Code	Description	Watts	Installation	Finish	Light Colour
DOM163	Smally XS Plus Downlight	3W	Recessed	Steel Colour	Natural White
DOM164	Smally XS Plus Downlight	3W	Recessed	Black	Natural White
DOM165	Smally XS Plus Downlight	3W	Recessed	Steel Colour	Warm White
DOM166	Smally XS Plus Downlight	3W	Recessed	Black	Warm White



Lighting Data



TOUCH ME 2.0

Touch Dimmer Switch

- 12-24Vdc
- 30-60W
- Micro12 and Micro24 connectors

Item Code	Description	Finish
DOM773	Touch Me 2.0 Touch Dimmer Switch	Aluminium Colour
DOM781	Touch Me 2.0 Touch Dimmer Switch	Black

CAPSENS 2.0

Concealed Touch Dimmer Switch

- 12-24Vdc
- 30-60W
- Micro12 and Micro24 connectors

Item Code	Description	Finish
DOM769	Capsens 2.0 Concealed Touch Dimmer Switch	Black

MINI TOUCH

Capacitive Dimmable Touch Switch

- 24Vdc
- 36W
- Micro24 connectors
- 2000mm input wiring
- 2000mm output wiring

Item Code	Description	Finish
DOM779	Mini Touch Capacitive Dimmable Touch Switch	Aluminium Colour


DOMUS LINE



PIR 2.0 FW

Passive Infrared Movement Sensor for Doors

- 12-24Vdc
- 36-72W
- Micro12 and Micro24 connectors
- 2000mm input wiring
- 2000mm output wiring + 150mm

Item Code	Description	Finish
DOM782	PIR 2.0 FW Passive Infrared Movement Sensor for Doors	Black
DOM783	PIR 2.0 FW Passive Infrared Movement Sensor for Doors	White
DOM784	Spacer for DOM782	Black
DOM785	Spacer for DOM783	White

CALL ME V17

Receiver & Remote Sensor with Dimming Function

- 12-24Vdc
- 36-72W
- Micro12 and Micro24 connectors
- 150mm input wiring
- 500mm output wiring

Item Code	Description	Finish
DOM775	Call Me V17 Receiver & Remote Sensor with Dimming Function	Silver Colour


DOMUS LINE



IR 2.0 FC Dual Function Electronic Proximity Switch

- 12-24Vdc
- 36-72W
- Micro12 and Micro24 connectors
- 2000mm input wiring
- 2000mm output wiring

Item Code	Description	Finish
DOM767	IR 2.0 FC Dual Function Electronic Proximity Switch	White



POLY Multiple Sensor Electronic Control System

- 12-24Vdc
- 36-72W
- Wiring in: 200mm Micro24 male
- Wiring out: 200mm Micro24 female
- DOM787 PIR sensor: 2000mm wiring
- DOM788 IR sensor: 2000mm wiring

Item Code	Description
DOM786	POLY Multiple Sensor Electronic Control System
DOM787	PIR Sensor for DOM786
DOM788	IR Sensor for DOM786, Including Surface Mount Support



X-Drivers

- 24Vdc: 30W, 60W and 96W
- With plug & play power cord

Item Code	Description	Vdc	Watts	Output
DOM881	X-Driver with power cable	24Vdc	30W	6 x Micro24
DOM882	X-Driver with power cable	24Vdc	60W	6 x Micro24
DOM883	X-Driver with power cable	24Vdc	96W	6 x Micro24



- WIFI X-Driver controller
- Control lights that are connected to X-Driver from your Smartphone
- Or via voice-controlled devices Alexa and Google Home
- Compatible with X-Driver 30W and 60W

Item Code	Description
DOM790	WIFI CM4-XD Module Control for X-Driver



Accessories

Item Code	Description
DOM839	24Vdc Extension Cable, 1m
DOM840	24Vdc Extension Cable, 2m
DOM841	24Vdc Distributor Block



ENHANCING LIVING
SPACES TOGETHER

Office and Distribution

22 Hood Street
Wellsford 0900
0800 852 258
info@fit-nz.co.nz
www.fit-nz.co.nz

Christchurch Distribution and Showroom

4 Morse Road
Wigram
Christchurch 8042



Fit NZ



fitnzhomestorage



fitnzhomestorage



FitNewZealand



houzz

