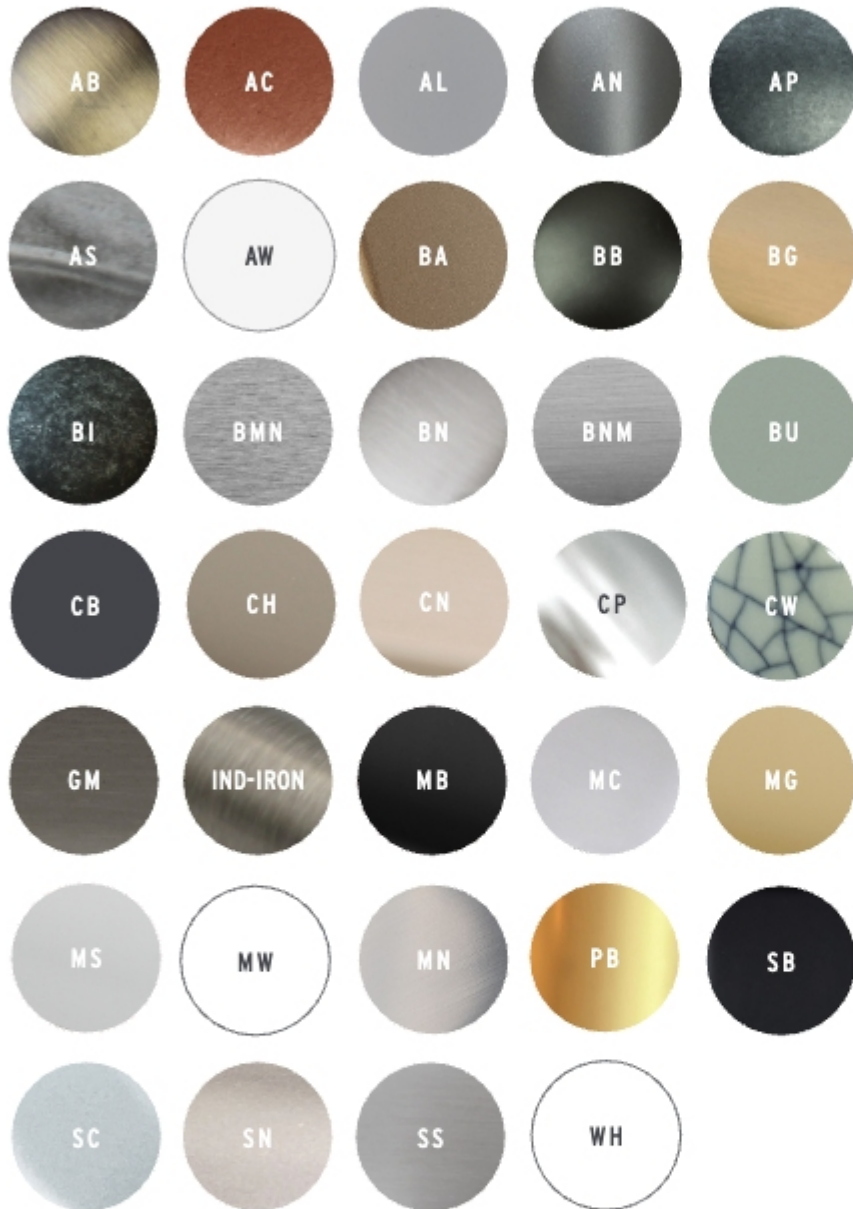




## Handles

Elite European Spanish Handles	3	
Clip System Extrusion Handles	7	
Elite Black & Gunmetal Handles	11	
Elite Modern Handles	23	
Elite Dee and Bow Handles	35	
Elite Knobs	39	
Elite Classical Collection	45	
Elite Overlay & Strip Handles	53	
Elite Inset Handles	59	
Elite Lumina Lighting Extrusions	63	
Elite Extrusion Handles	67	
<b>Elite Wardrobe Fittings</b>	<b>71</b>	
<b>Push to Open System Italiana Ferramenta Hardware</b>	<b>75</b>	
<b>Elite Legs &amp; Towel Rails</b>	<b>79</b>	
Index	83	

contents



Finish Information

Antique Bronze	AB
Antique Copper	AC
Aluminium	AL
Anthracite	AN
Antique Pewter	AP
Antique Silver	AS
Arctic White	AW
Bronze Alpha	BA
Bronze Black	BB
Brushed Gold	BG
Black Iron	BI
Brushed Matt Nickel	BMN
Brushed Nickel	BN
Brushed Nickel Matt	BNM
Bambu	BU
Cobalt Black	CB
Champagne	CH
Champagne Nickel	CN
Chrome Plated	CP
Crazed White	CW
Gunmetal	GM
Industrial Iron	IND-IRON
Matt Black	MB
Matt Chrome	MC
Matt Gold	MG
Matt Silver	MS
Matt White	MW
Mirror Nickel	MN
Polished Brass	PB
Satin Black	SB
Satin Chrome	SC
Satin Nickel	SN
Stainless Steel	SS
White	WH

Please Note

Brushed Nickel Matt - Fine Brushing, Brushed Matt Nickel - Medium Brushing.  
 Finishes can vary slightly between shipments. Photos in this catalogue are as close to the finished product as possible.



elite european | spanish handles

## Tana Tab

Code	Finish	CC	Length	Width
2244	BU	16	49	31
2245	SN	16	49	31
2246	MB	16	49	31
2247	BG	16	49	31
2248	BA	16	49	31
2249	WH	16	49	31
2250	PRIMER	16	49	31

No finish ready for powder coating



## Botone Knob

Code	Finish	Width	Height
3009	BU	40	17
3010	SN	40	17
3011	MB	40	17
3012	BG	40	17
3014	BA	40	17
3015	WH	40	17
3016	PRIMER	40	17

No finish ready for powder coating



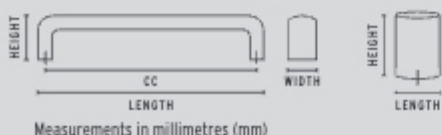
## Batlo Knob

Code	Finish	Length	Width	Height
4345	CB	60	15	26
4346	SN	60	15	26



## Batlo

Code	Finish	CC	Length	Width	Height
4351	CB	160	172	10	30
4353	CB	224	236	10	30
4352	SN	160	172	10	30
4354	SN	224	236	10	30



## Tuscany

Code	Finish	CC	Length	Width	Height
3086	AS	160	236	8	28
3087	AS	224	300	8	28
3088	CB	160	236	8	28
3089	CB	224	300	8	28



ANGLE THIS HANDLE  
DOWNWARD OR UPWARD

## Rhone

Code	Finish	CC	Length	Width	Height
6729	SN	192	207	14.5	23
6730	CB	192	207	14.5	23



## Moleto

Code	Finish	CC	Length	Width	Height
6954	CB	160	186	12	29
6955	CB	320	348	12	29
6956	SN	160	186	12	29
6957	SN	320	348	12	29
6960	BG	160	186	12	29
6961	BG	320	348	12	29



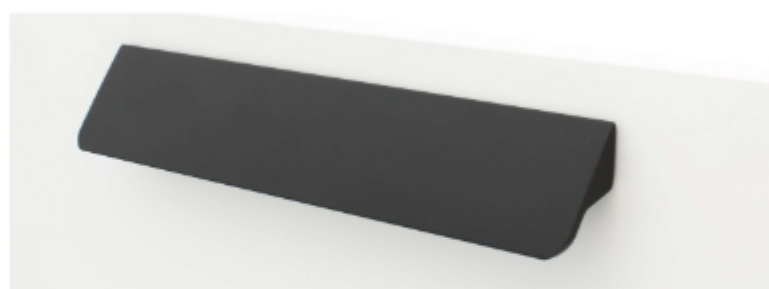
## Marbella

Code	Finish	CC	Length	Width	Height
4054	SN	96	150	27	25
4055	SN	192	272	27	25
4056	MB	96	150	27	25
4057	MB	192	272	27	25
4058	CB	96	150	27	25
4059	CB	192	272	27	25
4060	BG	96	150	27	25
4061	BG	192	272	27	25



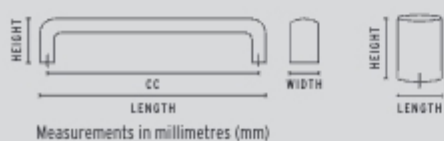
## Toledo

Code	Finish	CC	Length	Width	Height
6793	CB	128	200	20	38



## Alvaro

Code	Finish	CC	Length	Width	Height
6797	MC	96	150	27	25
6798	MB	96	150	27	25



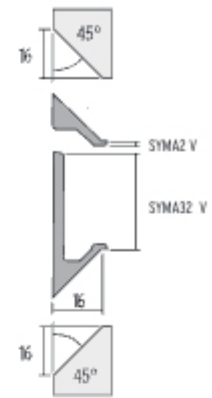


elite european | clip system extrusions



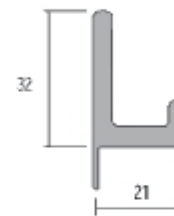
SYMA32 + SYMA2  
V PROFILE

ASSEMBLED SET



SYMA32  
U PROFILE

ASSEMBLED SET



SYMA32  
U PROFILE

LEFT / RIGHT PARTIAL



SYMA32  
U PROFILE

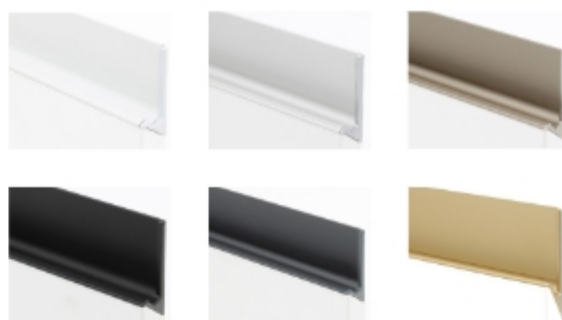
INSET



### V Profile Syma32

Extrusion + 5 sets of end caps + clips

Code	Finish	Length
SYMA3201P	MW	2950
SYMA3235P	MS	2950
SYMA3250P	CH	2950
SYMA3252P	MB	2950
SYMA3260P	AN	2950
SYMA3270P	MG	2950



### V Profile Syma2

Extrusion + 5 sets of end caps + clips

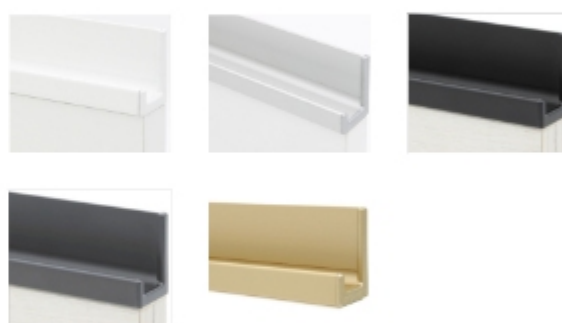
Code	Finish	Length
SYMA201P	MW	2950
SYMA235P	MS	2950
SYMA250P	CH	2950
SYMA252P	MB	2950
SYMA260P	AN	2950
SYMA270P	MG	2950



### U Profile Syma32

Extrusion + 5 sets of end caps + clips

Code	Finish	Length
SYMAP3201P	MW	2950
SYMAP3235P	MS	2950
SYMAP3252P	MB	2950
SYMAP3260P	AN	2950
SYMAP3270P	MG	2950



### EXTRAS



**Syma32 U Profile  
Pair End Caps**

Code	Finish
RSY32PEC01	MW
RSY32PEC35	MS
RSY32PEC52	MB
RSY32PEC60	AN
RSY32PEC70	MG



**Syma32 V Profile  
Pair End Caps**

Code	Finish
RSY32IN01PEC	MW
RSY32IN35PEC	MS
RSY32IN50PEC	CH
RSY32IN52PEC	MB
RSY32IN60PEC	AN
RSY32IN70PEC	MG



**Syma2 V Profile  
Pair End Caps**

Code	Finish
RSY2IN01PEC	MW
RSY2IN35PEC	MS
RSY2IN50PEC	CH
RSY2IN52PEC	MB
RSY2IN60PEC	AN
RSY2IN70PEC	MG



**U Profile Pair Clips**

CLIPSYMAR

**V Profile Pair Clips**

CLIPSYMAIN

See our website for installation information & video tutorials.

Create custom Partial or Inset handles by using the below extrusion & end caps.

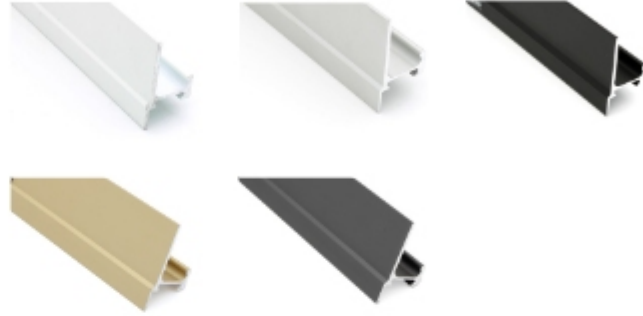
**1**  
Order the U Profile Syma32 Extrusion.

**2**  
Order pairs of the Left/Right Partial or Inset end caps.

**NB**  
Quantities ordered are based on the length & amount of handles required.

**1. U Profile Syma32 Extrusion 2950mm**  
Individual Item

Code	Finish
RSY3201MP	MW
RSY3235P	MS
RSY3252MP	MB
RSY3260P	AN
RSY3270P	MG

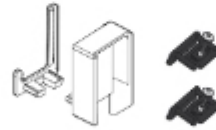


**2.**



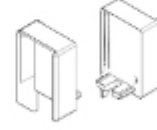
**Left Partial**  
1 left inset end cap + 1 right end cap  
+ 2 clips

Code	Finish
RSY32CL01	MW
RSY32CL35	MS
RSY32CL52	MB
RSY32CL60	AN
RSY32CL70	MG



**Right Partial**  
1 right inset end cap + 1 left end cap  
+ 2 clips

Code	Finish
RSY32CR01	MW
RSY32CR35	MS
RSY32CR52	MB
RSY32CR60	AN
RSY32CR70	MG



**Inset**  
1 right + 1 left inset endcap

Code	Finish
RSY32CC01	MW
RSY32CC35	MS
RSY32CC52	MB
RSY32CC60	AN
RSY32CC70	MG

See our website for installation information & video tutorials.



elite black & gunmetal handles

## Tuba

Code	Finish	CC	Length	Height	Width
2221	BB	128	152	24	24



## Maia

Code	Finish	CC	Length	Height	Width
2238	BB	128	159	29	14



## Neo

Code	Finish	CC	Length	Height	Width
2240	BB	128	159	27	20



## Siena

Code	Finish	CC	Length	Height	Width
2908	SB	128	136	24	13



## Alba

Code	Finish	CC	Length	Height	Width
2918	SB	128	198	29	24



### Tom Flat Bow

Code	Finish	CC	Length	Height	Width
3077	SB	128	141	32	15



### Traditional Bar

Code	Finish	CC	Length	Height	Width
3809 SB	SB	128	143	33	13
3810 SB	SB	160	175	33	13
3811 SB	SB	224	239	33	13
3812 SB	SB	256	271	33	13



### Inspire

Code	Finish	CC	Length	Height	Width
4000	SB	32	39	32	8.5
4001	SB	128	135	32	8.5
4002	SB	160	167	32	8.5
4003	SB	320	329	32	8.5
4004	AN	32	39	32	8.5
4005	AN	128	135	32	8.5
4006	AN	160	167	32	8.5
4007	AN	320	329	32	8.5



### Lorenzo

Code	Finish	CC	Length	Height	Width
4030	SB	128	136	25	12
4034	SB	160	168	25	12
4036	SB	256	264	25	12



### Hilton

Code	Finish	CC	Length	Height	Width
4604	SB	160	167	28	8
4605	SB	192	197	28	8
4606	SB	256	264	28	8



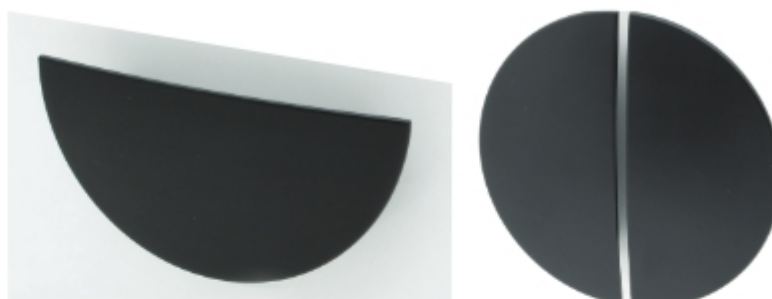
## Micala

Code	Finish	CC	Length	Height	Width
4704	SB	160	174	30	13



## Luna 1/2 Moon

Code	Finish	CC	Length	Height	Width
4741	SB	64	98	22	49



## Louisette

Code	Finish	CC	Length	Height	Width
4811	SB	160/192	212	24	15



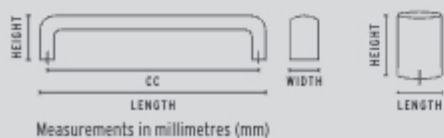
## Romana

Code	Finish	CC	Length	Height	Width
5710	SB	128	164	25	21
5711	SB	192	228	25	21
5712	SB	256	292	25	21
5713	SB	320	356	25	21
5815	GM	128	164	25	21
5816	GM	192	228	25	21
5817	GM	256	292	25	21
5818	GM	320	356	25	21



## Metropolis

Code	Finish	CC	Length	Height	Width
6160	GM	160	167	23	18



## Catalina

Code	Finish	CC	Length	Height	Width
6238	SB	128	137	34	12
6229	SB	160	170	34	12
6239	SB	256	265	34	12
6240	SB	320	329	34	12



## Viola

Code	Finish	CC	Length	Height	Width
6705	SB	128	136	26	16
6706	SB	160	168	29	20
6707	SB	192	200	29	20
6708	SB	256	264	29	20
6719	SB	320	328	29	20
6722	SB	416	424	29	22



## Malaga

Code	Finish	CC	Length	Height	Width
6759	SB	160	190	30	22



## Kara Slim Square

Code	Finish	CC	Length	Height	Width
6941	SB	128	154	27	8
6942	SB	160	192	27	8
6943	SB	256	292	27	8
6945	SB	320	356	27	8



## Contemporary Handle

Code	Finish	CC	Length	Height	Width
7011	SB	160	174	21	21
7012	SB	224	238	21	21



## Estela

Code	Finish	CC	Length	Height	Width
7112	SB	160	178	27.5	18



## Tuscany

Code	Finish	CC	Length
3088	CB	160	236
3089	CB	224	300



## Batlo

Code	Finish	CC	Length	Width	Height
4351	CB	160	172	10	30
4353	CB	224	236	10	30



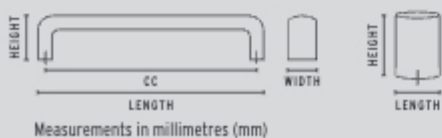
## Rhone

Code	Finish	CC	Length	Width	Height
6730	CB	192	207	14.5	23



## Moleto

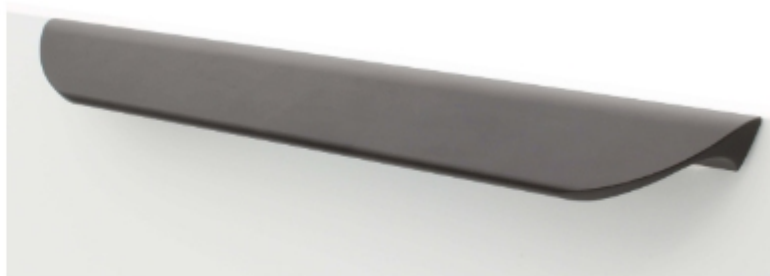
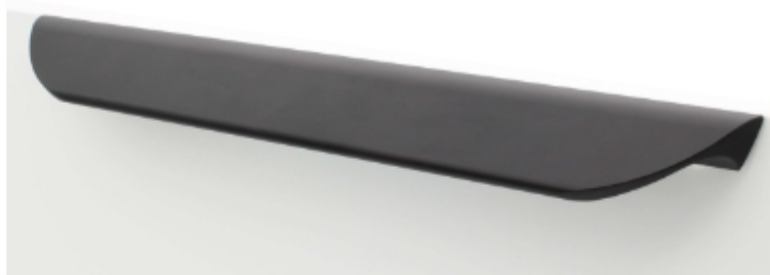
Code	Finish	CC	Length	Width	Height
6954	CB	160	186	12	29
6955	CB	320	348	12	29





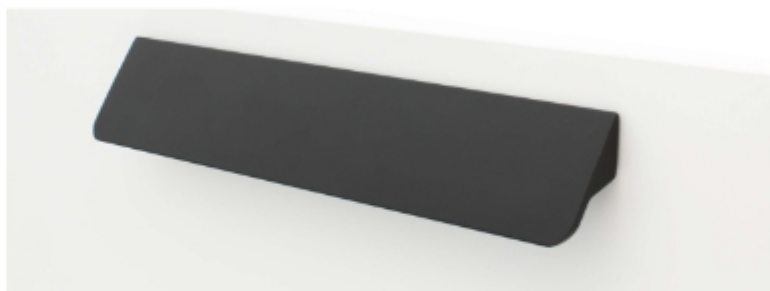
## Marbella

Code	Finish	CC	Length
4056	MB	96	150
4057	MB	192	272
4058	CB	96	150
4059	CB	192	272



## Toledo

Code	Finish	CC	Length
6793	CB	128	200



## Alvaro

Code	Finish	CC	Length
6798	MB	96	150





### Contemporary Knob

Code	Finish	Height	Width
2217	SB	27	28



### Tuba Knob

Code	Finish	Length	Height	Width
2223	BB	28	27	28



### Tana Tab

Code	Finish	CC	Length	Width
2246	MB	16	49	31



### Nicolette Knob

Code	Finish	Height	Width
2431	SB	30	32



### Botone Knob

Code	Finish	Length	Height
3011	MB	40	17



### Classic Knob

Code	Finish	Height	Width
3798	SB	25	33



### Traditional Knob

Code	Finish	Length	Height	Width
3815	GM	28	22	28
3815SB	SB	28	22	28



### Inspire Knob

Code	Finish	CC	Length	Height	Width
4000	SB	32	39	32	8.5
4004	AN	32	39	32	8.5



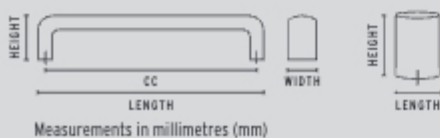
### Batllo Knob

Code	Finish	Length	Width	Height
4345	CB	60	15	26



### Viola Knob

Code	Finish	Length	Height	Width
6716	SB	34	30	22



### Kingston Pull

Code	Finish	CC	Length	Height	Width
3841	Black	128	133	41	20



### Kingston Drop

Code	Finish	CC	Length	Height
3842	Black	160	180	22



### Versailles Cup Handle

Code	Finish	CC	Length	Height
2050	SB	64	103	27



### Georgia Cup Handle

Code	Finish	CC	Length	Height
2058	SB	64	96	39



### Florentine Knob

Code	Finish	Length	Height	Width
3820B	SB	65	32	21



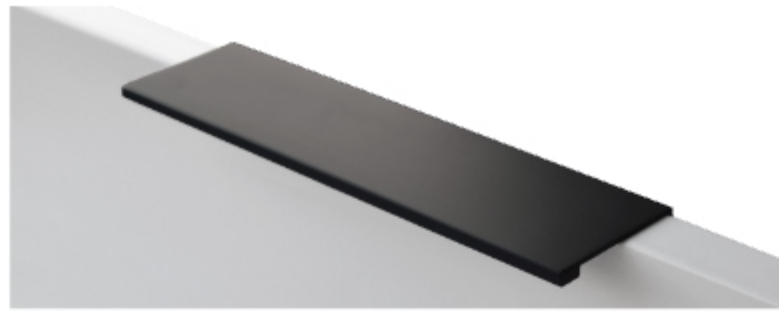
### Florentine Pull

Code	Finish	CC	Length	Height	Width
3821B	SB	128	145	35	21
3821D	BI	128	145	35	21



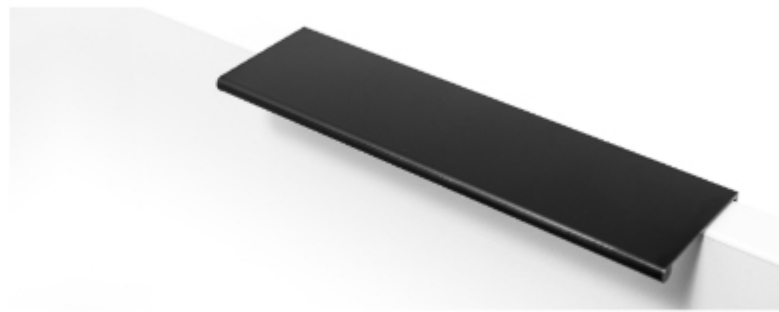
### Overlay Pull

Code	Finish	CC	Length
2065	SB	128	168
2073	SB	192	233



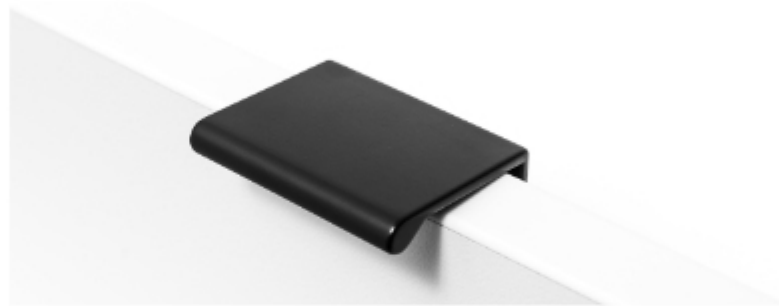
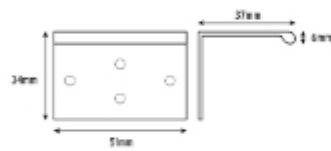
### Kasia Pull

Code	Finish	CC	Length
4732	SB	64	104
4734	SB	128	168
4736	SB	192	232



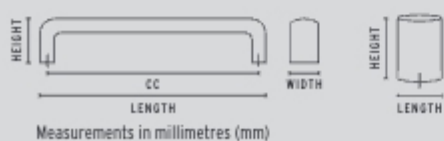
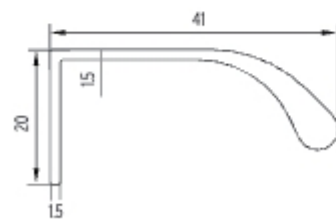
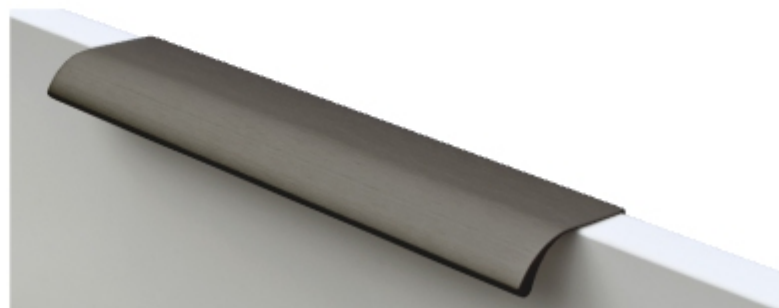
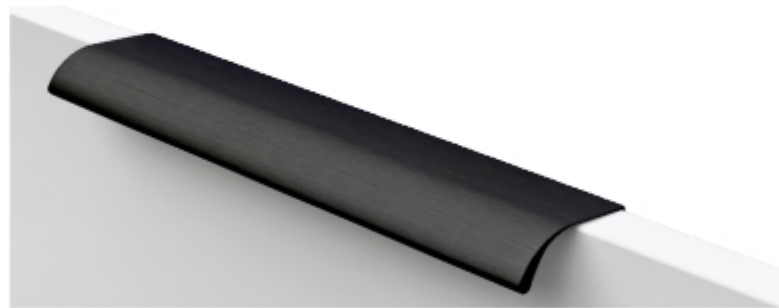
### Lorette Overlay Pull

Code	Finish	CC	Length
4802	SB		51



### Lucia Pull

Code	Finish	CC	Length	Height	Width
6776	SB	32	52	16	41
6778	SB	50	70	16	41
6779	SB	128	148	16	41
6780	SB	256	276	16	41
6782	GM	32	52	16	41
6783	GM	50	70	16	41
6784	GM	128	148	16	41
6785	GM	256	276	16	41



### Aurora Pull

Code	Finish	CC	Length	Height	Width
6510	SB		298	18	40.5
6511	SB		398	18	40.5
6512	SB		448	18	40.5
6513	SB		498	18	40.5
6515	SB		598	18	40.5
6516	SB		698	18	40.5
6517	SB		798	18	40.5
6519	SB		898	18	40.5



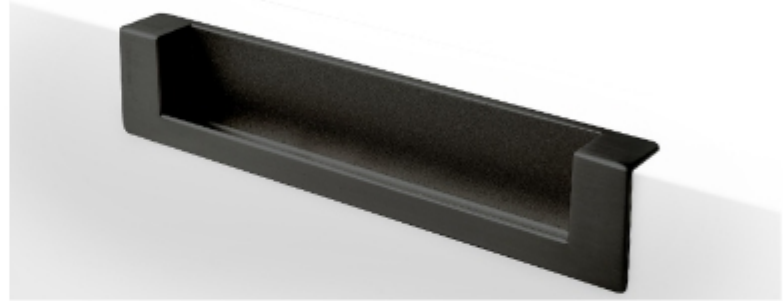
### Cordoba Pull

Code	Finish	CC	Length	Height	Width
8800	SB	16	33	20	15
8801	SB	160	177	20	15
8803	SB	256	273	20	15



### Oriane Inset Handle

Code	Finish	CC	Length	Height	Depth
4816	SB	128	149		13.5



### Ultimate Inset

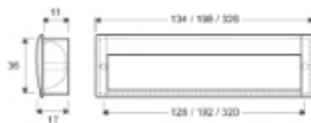
Code	Finish	Length	Height	Depth
6226	GM	202	50	16

For use with painted doors



### Elite Inset

Code	Finish	CC	Length	Depth
7761	SB	128	134	17
7762	SB	192	198	17



PLEASE CHECK MEASUREMENTS OF EXTRUSION BEFORE CUTTING AND INSTALLING. MEASUREMENTS CAN CHANGE WITHOUT NOTICE.

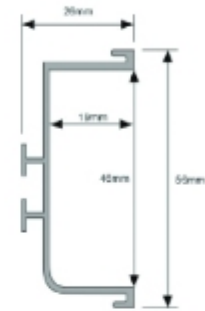
### Allegra G Profile with End Caps

Code	Finish	Length	Height	Board Width
8702	SB	3m	35	18
8692	SB	End Caps Pair		



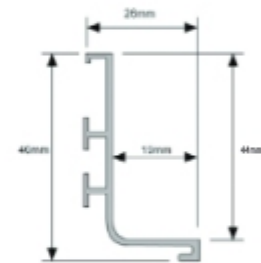
### Apollo Centre Profile

Code	Finish	Length	Height	Board Width
8882	SB	3m	56	19



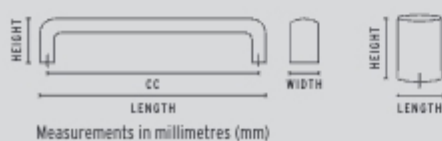
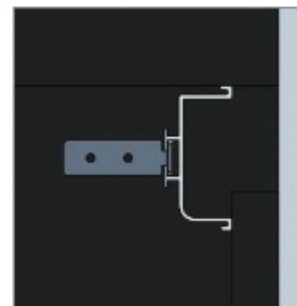
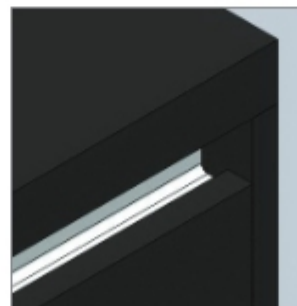
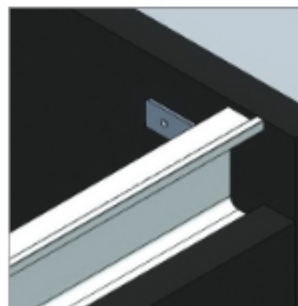
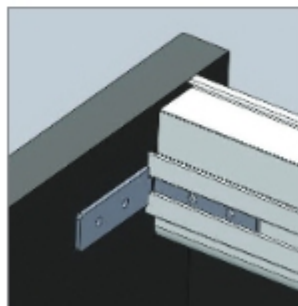
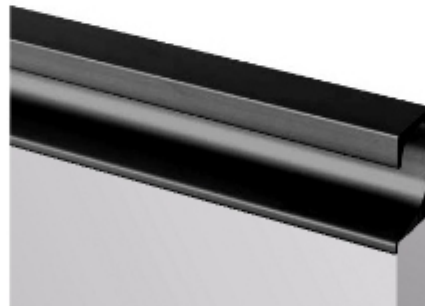
### Apollo Top Profile

Code	Finish	Length	Height	Board Width
8884	SB	3m	44	19



### Novara G Profile

Code	Finish	Length	Height	Board Width
8899	SB	3m	35	18





elite modern handles

## Tuba

Code	Finish	CC	Length	Height	Width
2229	BNM	128	152	24	24



## Siena

Code	Finish	CC	Length	Height	Width
2906	BN	128	136	24	13
2908	SB	128	136	24	13



## Alessia

Code	Finish	CC	Length	Height	Width
2912	BN	128	166	32	24



## Alba

Code	Finish	CC	Length	Height	Width
2915	BN	128	198	29	24
2918	SB	128	198	29	24





## Lorenzo

Code	Finish	CC	Length	Height	Width
3026	BN	96	104	25	12
3030	BN	128	136	25	12
3034	BN	160	168	25	12
3993	BN	192	201	25	12
3995	BN	256	264	25	12
3999	BN	288	296	25	12
3031	MC	96	104	25	12
3032	MC	128	136	25	12
3033	MC	160	168	25	12
3997	MC	256	264	25	12
4030	SB	128	136	25	12
4034	SB	160	168	25	12
4036	SB	256	264	25	12



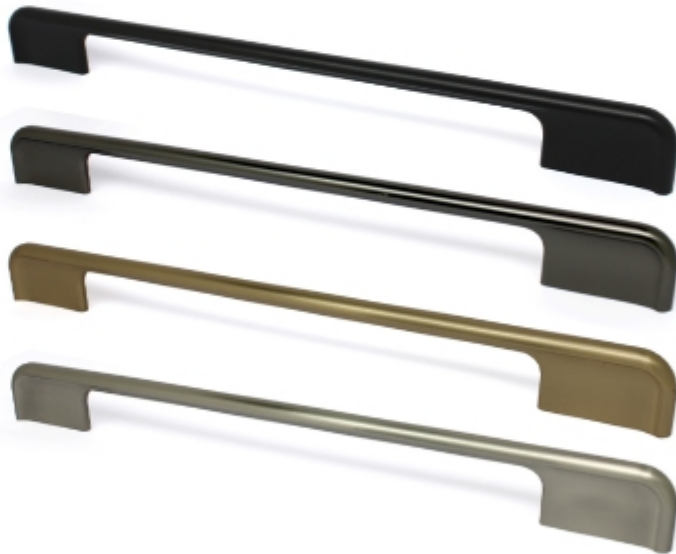
## Ultimate Wide Square

Code	Finish	CC	Length	Height	Width
3991	BN	128	136	25	22
3994	BN	160	168	25	22
3996	BN	224	232	25	22
3998	BN	288	296	25	22



## Inspire

Code	Finish	CC	Length	Height	Width
4000	SB	32	39	32	8.5
4001	SB	128	135	32	8.5
4002	SB	160	167	32	8.5
4003	SB	320	329	32	8.5
4004	AN	32	39	32	8.5
4005	AN	128	135	32	8.5
4006	AN	160	167	32	8.5
4007	AN	320	329	32	8.5
4008	BG	32	39	32	8.5
4009	BG	128	135	32	8.5
4010	BG	160	167	32	8.5
4011	BG	320	329	32	8.5
4012	BN	32	39	32	8.5
4013	BN	128	135	32	8.5
4014	BN	160	167	32	8.5
4015	BN	320	329	32	8.5



## V Base Square

Code	Finish	CC	Length	Height	Width
4252	BN	160	170	30	22
4253	BN	224	239	30	22
4255	BN	320	334	30	22



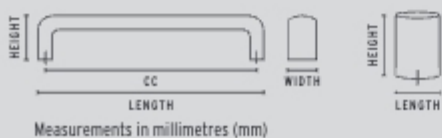
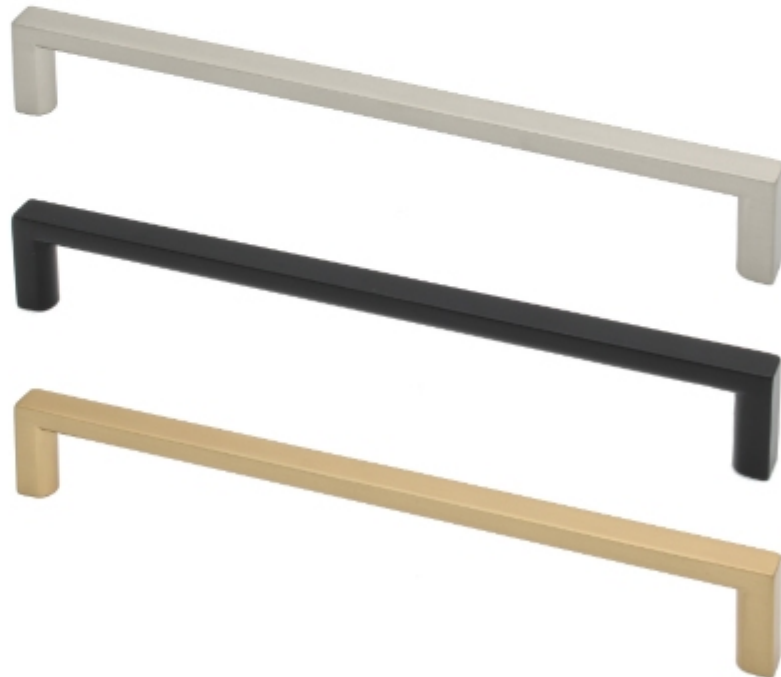
## Lia

Code	Finish	CC	Length	Height	Width
4331	BN	128	136	30	8
4332	BN	192	200	30	8
4333	BN	320	328	30	8
4339	BN	492	500	30	8
4334	MC	128	136	30	8
4335	MC	192	200	30	8
4336	MC	320	328	30	8
4340	MC	492	500	30	8
4337	CP	128	136	30	8
4338	CP	192	200	30	8



## Hilton

Code	Finish	CC	Length	Height	Width
4600	BNM	160	167	28	8
4601	BNM	192	197	28	8
4602	BNM	256	264	28	8
4604	SB	160	167	28	8
4605	SB	192	197	28	8
4606	SB	256	264	28	8
4608	BG	160	167	28	8
4609	BG	192	197	28	8
4610	BG	256	264	28	8



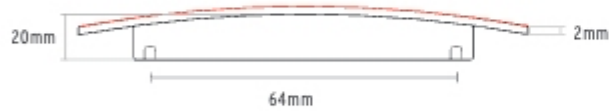
## Micala

Code	Finish	CC	Length	Height	Width
4701	BNM	160	174	30	13
4702	PB	160	174	30	13
4703	AC	160	174	30	13
4704	SB	160	174	30	13



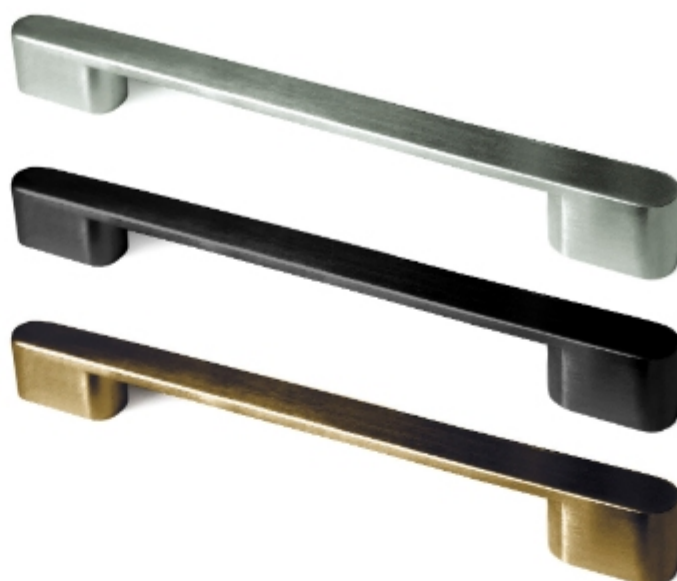
## Luna 1/2 Moon

Code	Finish	CC	Length	Height	Width
4739	BNM	64	98	22	49
4740	BG	64	98	22	49
4741	SB	64	98	22	49



## Louissette

Code	Finish	CC	Length	Height	Width
4810	BN	160/192	212	24	15
4811	SB	160/192	212	24	15
4812	AB	160/192	212	24	15



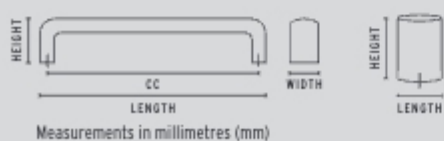
## Romana

Code	Finish	CC	Length	Height	Width
5710	SB	128	164	25	21
5711	SB	192	228	25	21
5712	SB	256	292	25	21
5713	SB	320	356	25	21
5810	BNM	128	164	25	21
5811	BNM	192	228	25	21
5812	BNM	256	292	25	21
5813	BNM	320	356	25	21
5814	MC	128	164	25	21
5815	GM	128	164	25	21
5816	GM	192	228	25	21
5817	GM	256	292	25	21
5818	GM	320	356	25	21



## Violetta

Code	Finish	CC	Length	Height	Width
5805	BNM	128	157	20	10
5806	BNM	192	208	20	10
5807	BNM	224	252	20	10
5808	BNM	320	348	20	10



### Bar Handle

Code	Finish	CC	Length	Height	Width
6010	BN	96	136	36	12
6020	BN	128	168	36	12
6030	BN	160	200	36	12
6040	BN	192	232	36	12
6050	BN	288	328	36	12
6060	BN	448	488	36	12



### Metropolis

Code	Finish	CC	Length	Height	Width
6157	BN	160	167	23	18
6158	BN	192	199	25	18
6160	GM	160	167	23	18



### Giovanna

Code	Finish	CC	Length	Height	Width
6171	BNM	128	164	28	12
6172	BNM	192	239	28	12
6173	BNM	256	303	28	12
6174	BNM	320	367	28	12



### Milan Square

Code	Finish	CC	Length	Height	Width
6194	BN	160	168	22	18
6195	BN	192	200	24	18
6196	BN	256	264	26	18



### Alanzo

Code	Finish	CC	Length	Height	Width
6197	BNM	128	140	28	13
6199	BNM	160	172	28	13



## Catalina

Code	Finish	CC	Length	Height	Width
6231	BNM	128	137	34	12
6228	BNM	160	170	34	12
6232	BNM	256	265	34	12
6233	BNM	320	329	34	12
6238	SB	128	137	34	12
6229	SB	160	170	34	12
6239	SB	256	265	34	12
6240	SB	320	329	34	12
6242	BG	128	137	34	12
6243	BG	160	170	34	12
6244	BG	256	265	34	12



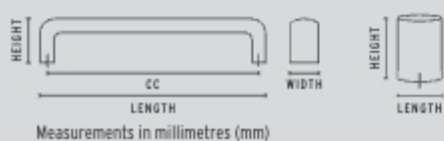
## Giorgio Flat Cross Bar

Code	Finish	CC	Length	Height	Width
6432	MC	128	140	35	16
6434	MC	160	172	35	16
6435	MC	224	236	35	16
6436	MC	288	300	35	16
6438	MC	448	460	35	16
6440	MC	544	556	35	16
6552	BN	128	140	35	16
6553	BN	160	172	35	16
6550	BN	224	236	35	16
6548	BN	256	268	35	16
6554	BN	288	300	35	16
6549	BN	320	332	35	16
6555	BN	448	460	35	16
6556	BN	544	556	35	16



## Sandford

Code	Finish	CC	Length	Height	Width
6650	BNM	160	169	32	18



### Alena

Code	Finish	CC	Length	Height	Width
6571	BNM	128	237	32	8.5
6572	BNM	192	301	32	8.5
6573	BNM	256	365	32	8.5
6574	BNM	320	429	32	8.5



### Areliá

Code	Finish	CC	Length	Height	Width
6664	MC	192	227	27	24



### Viola

Code	Finish	CC	Length	Height	Width
6701	BNM	128	136	26	16
6702	BNM	160	168	29	20
6703	BNM	192	200	29	20
6704	BNM	256	264	29	20
6718	BNM	320	328	29	20
6721	BNM	416	424	29	22
6705	SB	128	136	26	16
6706	SB	160	168	29	20
6707	SB	192	200	29	20
6708	SB	256	264	29	20
6719	SB	320	328	29	20
6722	SB	416	424	29	22
6709	AC	128	136	26	16
6710	AC	160	168	29	20
6711	AC	192	200	29	20
6712	AC	256	264	29	20
6720	AC	320	328	29	20
6723	AC	416	424	29	22
6724	BG	128	136	26	16
6725	BG	160	168	29	20
6726	BG	192	200	29	20
6727	BG	256	264	29	20



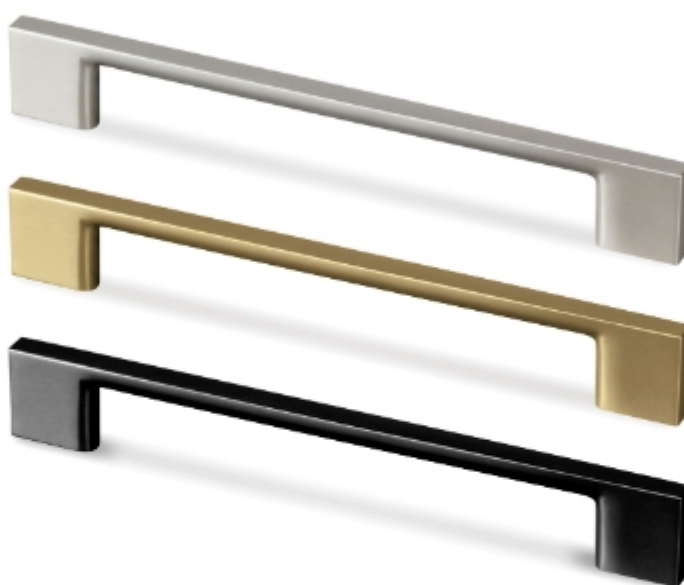
## Malaga

Code	Finish	CC	Length	Height	Width
6758	SN	160	190	30	22
6759	SB	160	190	30	22



## Kara Slim Square

Code	Finish	CC	Length	Height	Width
6885	BN	96	126	27	8
6886	BN	128	155	27	8
6888	BN	160	192	27	8
6889	BN	192	220	27	8
6906	BN	256	292	27	8
6908	BN	320	356	27	8
6910	BG	128	155	27	8
6911	BG	160	192	27	8
6912	BG	256	292	27	8
6991	MC	96	113	27	8
6992	MC	128	154	27	8
6993	MC	160	192	27	8
6907	MC	256	292	27	8
6909	MC	320	356	27	8
6941	SB	128	154	27	8
6942	SB	160	192	27	8
6943	SB	256	292	27	8
6945	SB	320	356	27	8



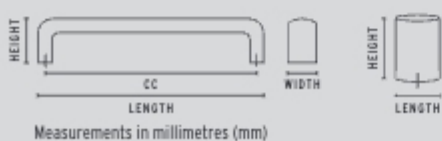
## Vibe

Code	Finish	CC	Length	Height	Width
6920	BMN	160	188	34	9
6921	BMN	192	220	34	9
6922	BMN	224	252	34	9
6923	BMN	256	284	34	9
6924	BMN	320	348	34	9
6926	BMN	448	476	34	9
6928	BMN	544	572	34	9



## Mario

Code	Finish	CC	Length	Height	Width
7030	BN	128	146	32	15
7031	BN	224	242	32	15





### Contemporary Handle

Code	Finish	CC	Length	Height	Width
7011	SB	160	174	21	21
7012	SB	224	238	21	21
7013	AP	160	174	21	21
7014	AP	224	238	21	21
7016	BI	160	174	21	21
7017	BI	224	238	21	21
7021	MC	128	142	21	21
7025	MC	160	174	21	21
7026	MC	224	238	21	21
7022	BN	128	142	21	21
7023	BN	160	174	21	21
7024	BN	224	238	21	21
7027	BN	256	270	21	21



### Estela

Code	Finish	CC	Length	Height	Width
7110	BMN	160	178	27.5	18
7111	BI	160	178	27.5	18
7112	SB	160	178	27.5	18



### Amelia Cross Bar 14mm

Code	Finish	CC	Length	Height	Width
7201	BN	128	149	36	14
7202	BN	160	181	36	14
7204	BN	224	245	36	14
7205	BN	352	373	36	14
7207	BN	544	565	36	14



### Contemporary Square

Code	Finish	CC	Length	Height	Width
7280	SS	128	142	42	15
7281	SS	160	174	42	15
7283	SS	256	270	42	15
7285	SS	320	334	42	15
7287	SS	448	472	42	15



### Amelia Cross Bar 10mm

Code	Finish	CC	Length	Height	Width
7310	BN	128	149	38	10
7311	BN	160	181	38	10
7312	BN	192	213	38	10
7313	BN	288	308	38	10
7314	BN	384	405	38	10
7315	BN	544	565	38	10



### Designer Wide Square

Code	Finish	CC	Length	Height	Width
7440	BMN	128	160	27	25
7441	BMN	160	192	27	25
7443	BMN	224	256	27	25
7446	BMN	320	352	27	25
7448	BMN	448	480	27	25



### Designer Slim Square

Code	Finish	CC	Length	Height	Width
7450	BMN	160	210	30	9
7451	BMN	192	242	30	9
7452	BMN	224	274	30	9
7453	BMN	256	306	30	9
7454	BMN	320	370	30	9
7455	BMN	384	434	30	9
7457	BMN	480	530	30	9
7460	MC	160	210	30	9
7461	MC	192	242	30	9
7463	MC	256	306	30	9
7465	MC	384	434	30	9
7470	CP	160	210	30	9
7472	CP	256	306	30	9
7474	CP	384	434	30	9



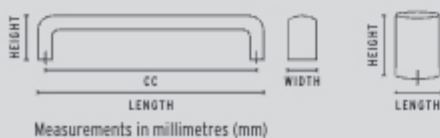
### Modular Handle

Code	Finish	CC	Length	Height	Width
7481	BNM	160	188	35	16
7483	BNM	224	252	35	16
7490	BNM	650	678	35	16



### Cube Cross Bar

Code	Finish	CC	Length	Height	Width
7560	MC	128	150	38	15
7562	MC	192	214	38	15
7563	MC	256	278	38	15
7565	MC	352	374	38	15
7567	MC	544	566	38	15





elite dee & bow handles

## D Handle

Code	Finish	CC	Length	Height	Width
1268	MC	96	106	35	10
1269	MC	128	138	35	10
1290	BN	96	106	35	10
1270	BN	128	138	35	10
1275	BN	160	170	35	10
1277	BN	256	266	35	10
1278	BN	320	330	35	10



## Nova

Code	Finish	CC	Length	Height	Width
3003	BN	128	184	24	21
3004	MC	128	184	24	15



## Twist Bow

Code	Finish	CC	Length	Height	Width
3005	BN	128	168	30	16
3007	MC	128	168	30	16



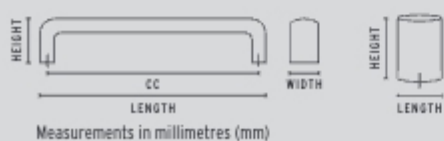
## Slim Bow

Code	Finish	CC	Length	Height	Width
3020	BN	96	114	23	10
3028	BN	128	145	23	10
3027	MC	96	114	23	10
3029	MC	128	145	23	10



## Standard Bow

Code	Finish	CC	Length	Height	Width
3035	BN	96	115	31	10
3036	BN	128	155	31	10
3037	MC	96	115	30	10
3038	MC	128	155	30	10
3041	SS	96	113	34	12
3044	SS	192	216	34	12



## Capri

Code	Finish	CC	Length	Height	Width
3050	BN	96	121	22	12
3055	BN	128	156	22	12
3059	BN	192	220	22	12
3060	BN	320	350	22	12
3057	MC	128	156	22	12



## Tom Flat Bow

Code	Finish	CC	Length	Height	Width
3072	BN	96	105	32	15
3075	BN	128	141	32	15
3076	MC	128	141	32	15
3077	SB	128	141	32	15



## Josh Wide Bow

Code	Finish	CC	Length	Height	Width
3082	BN	96	105	27	19
3084	BN	128	141	27	19



## Big Bow

Code	Finish	CC	Length	Height	Width
3900	BN	128	145	26	10
3901	MC	128	145	26	10
3902	SN	128	145	26	10







elite knobs

### Alisa

Code	Finish	Height	Width
1998	BN	27	25
1999	MC	27	25



### Carrado

Code	Finish	CC	Length	Height	Width
2002	BN	16	25	21	25
2004	MC	16	25	21	25



### Kira Knob

Code	Finish	Height	Width
2020	BN	29	30
2420	BNM	29	30
2421	PB	29	30
2422	AC	29	30



### Adella

Code	Finish	Length	Height	Width
2025	BN	44	18	20
2027	MC	44	18	20
2028	CP	44	18	20



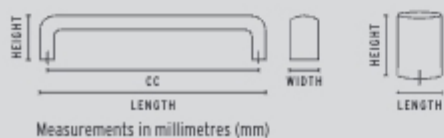
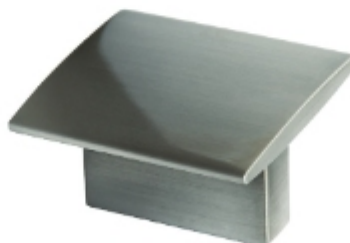
### Enzo

Code	Finish	Height	Width
2033	BN	28	35



### Michelle Square Knob

Code	Finish	CC	Length	Height	Width
2071	BN	16	36	21	36
2072	MC	16	36	21	36





## Klara

Code	Finish	Length	Height	Width
2075	BN	30	16	13
2076	MC	30	16	13



## Florenza

Code	Finish	Height	Width
2100	AP	27.5	31
2101	CP	27.5	31
2102	BN	27.5	31
2103	AB	27.5	31



## Cino

Code	Finish	Height	Width
2117	MC	28	31



## Contemporary Knob

Code	Finish	Height	Width
2214	BI	27	28
2215	AP	27	28
2216	BB	27	28
2217	SB	27	28
2218	CP	27	28
2219	BN	27	28



## Tuba Knob

Code	Finish	Length	Height	Width
2223	BB	28	27	28
2226	BI	28	27	28
2227	BNM	28	27	28



## Tana Tab

Code	Finish	CC	Length	Width
2244	BU	16	49	31
2245	SN	16	49	31
2246	MB	16	49	31
2247	BG	16	49	31
2248	BA	16	49	31
2249	WH	16	49	31
2250	PRIMER	16	49	31

No finish ready for powder coating

BU



## Nicolette Knob

Code	Finish	Height	Width
2430	BNM	30	32
2431	SB	30	32
2432	BG	30	32



## Botone Knob

Code	Finish	Width	Height
3009	BU	40	17
3010	SN	40	17
3011	MB	40	17
3012	BG	40	17
3014	BA	40	17
3015	WH	40	17
3016	PRIMER	40	17

No finish ready for powder coating

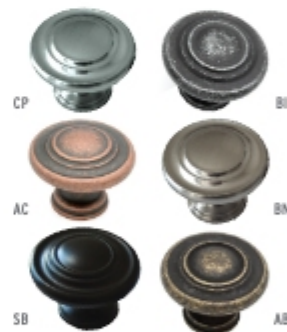
SN



## Classic Knob

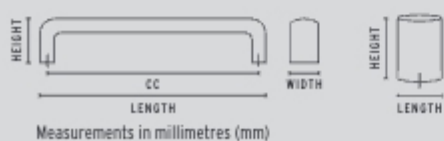
Code	Finish	Height	Width
3793	CP	25	33
3797	AC	25	33
3798	SB	25	33
3801	AP	25	33
3802	BI	25	33
3803	BN	25	33
3804	AB	25	33

AP



## Inspire Knob

Code	Finish	CC	Length	Height	Width
4000	SB	32	39	32	8.5
4004	NBG	32	39	32	8.5
4008	BG	32	39	32	8.5
4012	BN	32	39	32	8.5



### Batlo Knob

Code	Finish	Length	Width	Height
4345	CB	60	15	26
4346	SN	60	15	26



### Metro

Code	Finish	CC	Length	Height	Width
6205	CP	32	71	21	18
6206	BN	32	71	21	18
6207	MC	32	71	21	18



### Stasya

Code	Finish	CC	Length	Height	Width
6208	BN	32	66	27	12



### Viola Knob

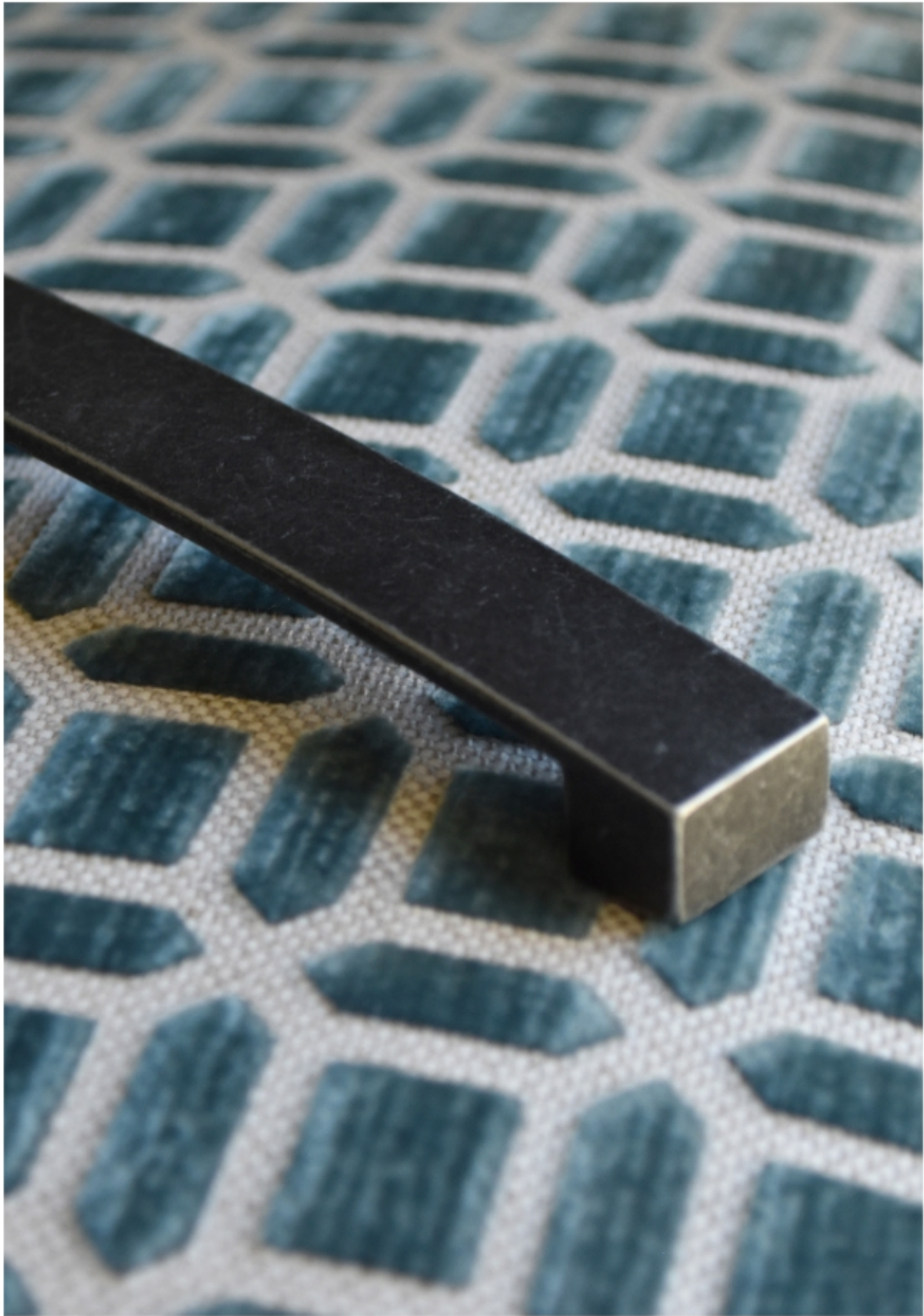
Code	Finish	Length	Height	Width
6715	BNM	34	30	22
6716	SB	34	30	22
6717	AC	34	30	22



### Cordoba Pull

Code	Finish	CC	Length	Height	Width
8800	SB	16	33	20	15
8795	SN	16	33	20	15







elite classical collection

## Juliet Pull

Code	Finish	CC	Length	Height	Width
1559	AB / Crazed Cream	128	140	40	22



## Juliet Knob

Code	Finish	Length	Height	Width
1865	AB / Crazed Cream	28	24	28



## Ainsley

Code	Finish	Length	Height	Width
1855	AP	30	22	30
1856	BN	30	22	30



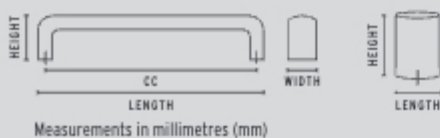
## Versailles Cup Handle

Code	Finish	CC	Length	Height
2039	BI	64	103	27
2048	AP	64	103	27
2050	SB	64	103	27
2051	AB	64	103	27
2052	CP	64	103	27



## Georgia Cup Handle

Code	Finish	CC	Length	Height
2058	SB	64	96	39
2054	CP	64	96	39
2059	BN	64	96	39



## Florenza

Code	Finish	Height	Width
2100	AP	27.5	31
2101	CP	27.5	31
2102	BN	27.5	31
2103	AB	27.5	31



## Contemporary Knob

Code	Finish	Length	Height	Width
2214	BI	27	27	27
2215	AP	27	27	27
2216	BB	27	27	27



## Tuba

Code	Finish	CC	Length	Height	Width
2221	BB	128	152	24	24
2224	BI	128	152	24	24
2229	BNM	128	152	24	24



## Tuba Knob

Code	Finish	Length	Height	Width
2223	BB	28	27	28
2226	BI	28	27	28
2227	BNM	28	27	28



## Maia

Code	Finish	CC	Length	Height	Width
2238	BB	128	159	29	14



## Neo

Code	Finish	CC	Length	Height	Width
2240	BB	128	159	27	20



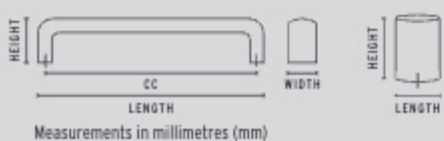
## Tuscany

Code	Finish	CC	Length
3086	AS	160	236
3087	AS	224	300
3088	CB	160	236
3089	CB	224	300



## Classic Knob

Code	Finish	Length	Height	Width
3793	CP	33	25	33
3797	AC	33	25	33
3798	SB	33	25	33
3801	AP	33	25	33
3802	BI	33	25	33
3803	BN	33	25	33
3804	AB	33	25	33





### Traditional Bar

Code	Finish	CC	Length	Height	Width
3805	IND-IRON	128	143	33	13
3806	IND-IRON	160	175	33	13
3807	IND-IRON	224	239	33	13
3808	IND-IRON	256	271	33	13
3809 SB	SB	128	143	33	13
3810 SB	SB	160	175	33	13
3811 SB	SB	224	239	33	13
3812 SB	SB	256	271	33	13



### Traditional Knob

Code	Finish	Length	Height	Width
3815 SB	SB	28	22	28
3815	GM	28	22	28
3814	IND-IRON	28	22	28



### Florentine Knob

Code	Finish	Length	Height	Width
3820B	SB	65	32	21
3820D	BI	65	32	21
3820P	AP	65	32	21



### Florentine Pull

Code	Finish	CC	Length	Height	Width
3821P	AP	128	145	35	21
3821B	SB	128	145	35	21
3821D	BI	128	145	35	21



### Florentine Drop

Code	Finish	CC	Length	Width
3822D	BI	160	188	21
3827	AB	160	188	21



## Nicollet

Code	Finish	Length	Height	Width
3830	AP / Crazed White	85	42	27



## Newport T Knob

Code	Finish	Length	Height	Width
3829	AP / Crazed White	74	40	23



## Newport Knob

Code	Finish	Length	Height	Width
3831	Crazed White SO	38	26	38
3835	AP / Crazed White	32	27	32
3836	Crazed White RND	32	30	32



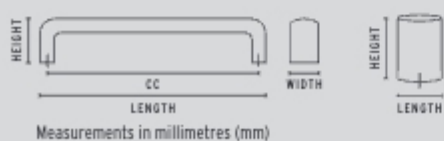
## Newport Pull

Code	Finish	CC	Length	Height	Width
3832	AP / Crazed White	128	152	40	23



## Newport Drop

Code	Finish	CC	Length	Height	Width
3833	AP / Crazed White	160	175	23	23



### Maddison Pull

Code	Finish	CC	Length	Height	Width
3834	CP / White	128	152	40	23



### Maddison Knob

Code	Finish	Length	Height	Width
3837	White	30	30	32
3837	CP / White	32	27	32



### Kingston Pull

Code	Finish	CC	Length	Height	Width
3841	Black	128	133	41	20



### Kingston Drop

Code	Finish	CC	Length	Height
3842	Black	160	180	22

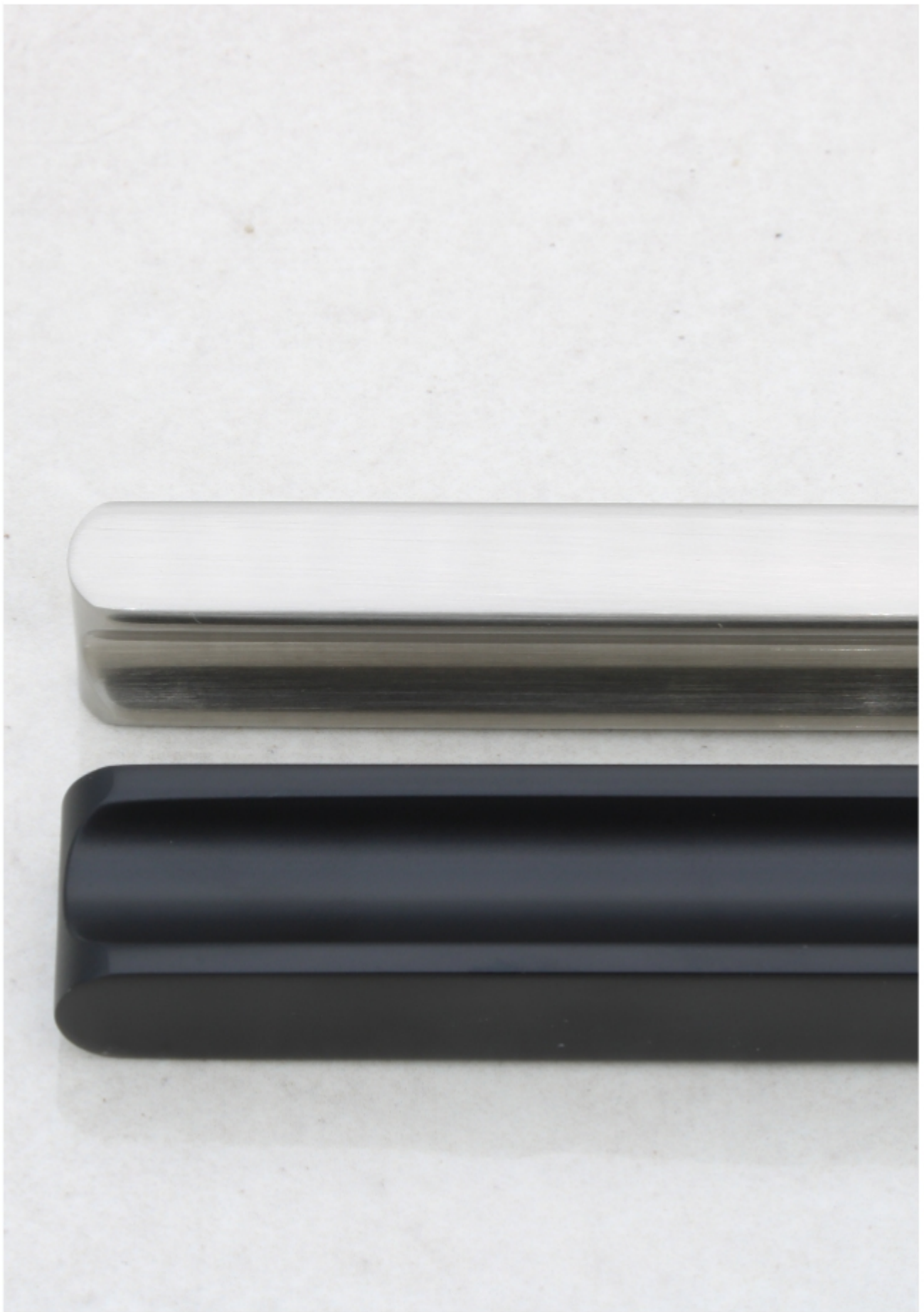


### Contemporary Handle

Code	Finish	CC	Length	Height	Width
7011	SB	160	174	21	21
7012	SB	224	238	21	21
7013	AP	160	174	21	21
7014	AP	224	238	21	21
7016	BI	160	174	21	21
7017	BI	224	238	21	21







elite overlay & strip handles

PLEASE CHECK MEASUREMENTS OF HANDLE BEFORE INSTALLING. MEASUREMENTS CAN CHANGE WITHOUT NOTICE.

### Nouveau Pull

Code	Finish	CC	Length	Height	Width
2301	BN	128	140	18	13
2302	MC	128	140	18	13



### Cordoba Pull

Code	Finish	CC	Length	Height	Width
8800	SB	16	33	20	15
8801	SB	160	177	20	15
8803	SB	256	273	20	15
8795	SN	16	33	20	15
8796	SN	160	177	20	15
8797	SN	256	273	20	15



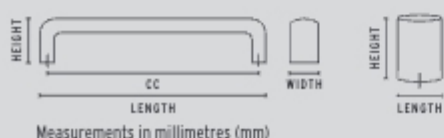
### Savilla Pull

Code	Finish	CC	Length	Height	Width
8806	BN	128	160	18	12
8808	BN	192	224	18	12
8811	BN	256	286	18	12



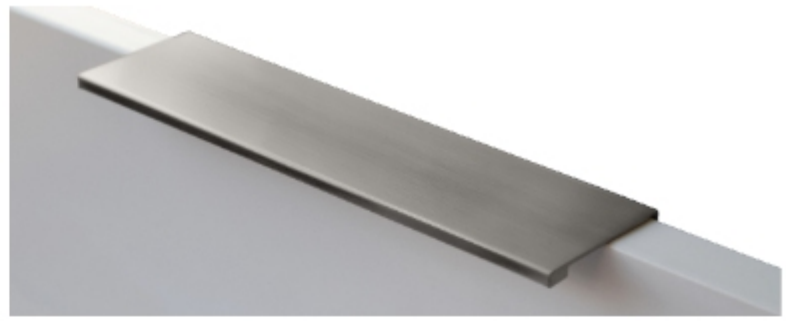
### Madrid Pull

Code	Finish	Holes	Length	Height	Width
8875	AL	Every 96mm	500	17	9



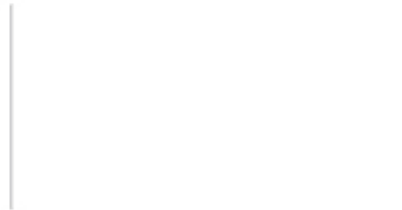
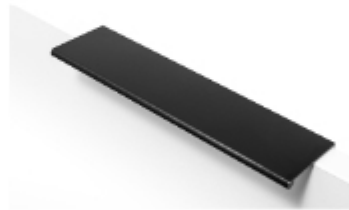
## Overlay Pull

Code	Finish	CC	Length
2060	BN	64	105
2061	BN	128	168
2063	BN	192	233
2065	SB	128	168
2073	SB	192	233
2067	MC	64	105
2068	MC	128	168



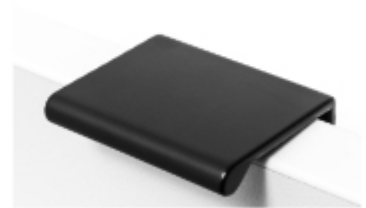
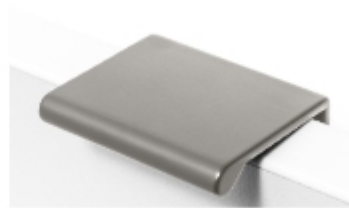
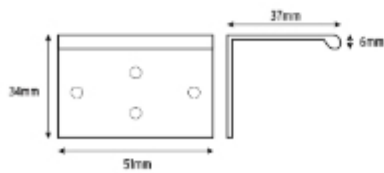
## Kasia Pull

Code	Finish	CC	Length
4722	CN	64	104
4724	CN	128	168
4726	CN	192	232
4732	SB	64	104
4734	SB	128	168
4736	SB	192	232



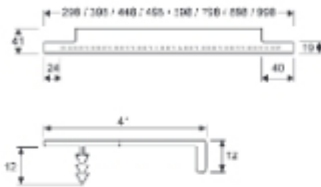
## Lorette Overlay Pull

Code	Finish	CC	Length
4801	BN	51	
4802	SB	51	
4803	MC	51	



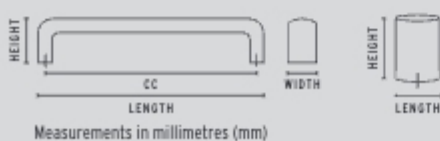
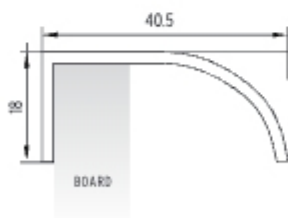
## Ultimate Top Handle

Code	Finish	Length	Height	Depth
6211	MC	398	12	41
6212	MC	448	12	41
6213	MC	498	12	41
6215	MC	598	12	41
6216	MC	698	12	41
6217	MC	798	12	41
6219	MC	898	12	41
6221	MC	998	12	41
6222	MC	1198	12	41



## Aurora Pull

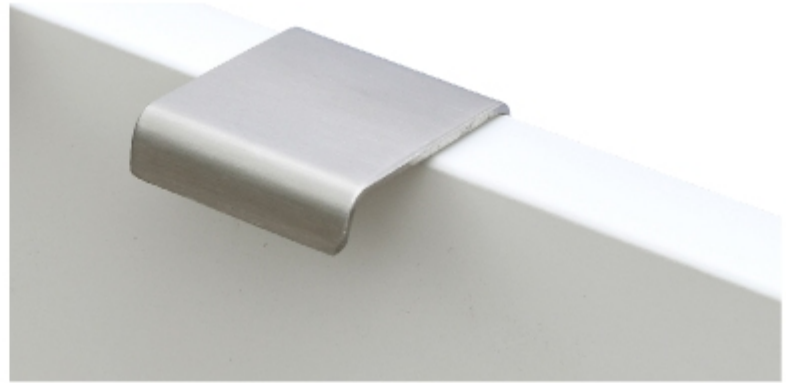
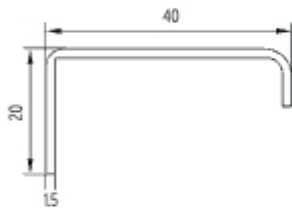
Code	Finish	Length	Height	Width
6411	BN	398	18	40.5
6412	BN	448	18	40.5
6413	BN	498	18	40.5
6416	BN	698	18	40.5
6419	BN	898	18	40.5
6510	SB	298	18	40.5
6511	SB	398	18	40.5
6512	SB	448	18	40.5
6513	SB	498	18	40.5
6515	SB	598	18	40.5
6516	SB	698	18	40.5
6517	SB	798	18	40.5
6519	SB	898	18	40.5





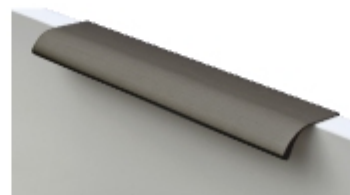
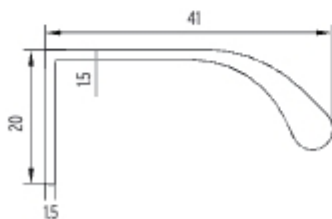
## Electra Pull

Code	Finish	CC	Length	Height	Width
6760	SS	32	52	9.5	40
6762	SS	96	116	9.5	40
6764	SS	192	212	9.5	40
6766	SS	256	276	9.5	40
6768	SS	352	372	9.5	40
6769	SS	416	436	9.5	40



## Lucia Pull

Code	Finish	CC	Length	Height	Width
6773	BG	50	70	16	41
6775	BG	128	148	16	41
6777	BG	256	276	16	41
6770	BNM	32	52	16	41
6771	BNM	50	70	16	41
6772	BNM	128	148	16	41
6776	SB	32	52	16	41
6778	SB	50	70	16	41
6779	SB	128	148	16	41
6780	SB	256	276	16	41
6782	GM	32	52	16	41
6783	GM	50	70	16	41
6784	GM	128	148	16	41
6785	GM	256	276	16	41
6786	WH	32	52	16	41
6787	WH	50	70	16	41
6788	WH	128	148	16	41
6789	WH	256	276	16	41







elite inset handles

PLEASE CHECK MEASUREMENTS OF HANDLE BEFORE INSTALLING. MEASUREMENTS CAN CHANGE WITHOUT NOTICE.

## Can't find the right Inset handle?

Customise your own with the Clip System Insets:

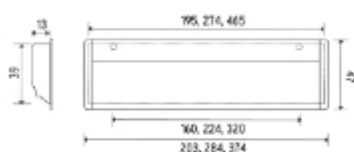
- Achieve any handle length up to 2950mm
- European design
- Easy installation
- Flushed & minimal style

See the 'Clip Systems' in this catalogue for more.



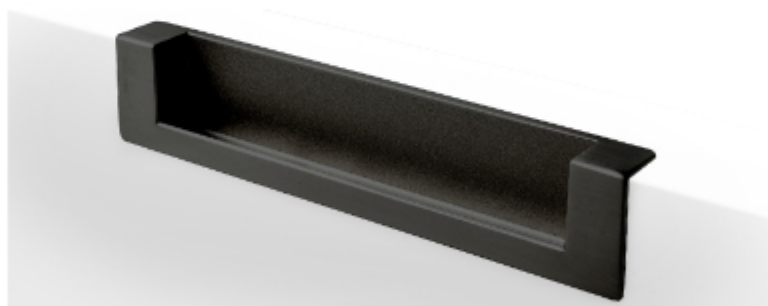
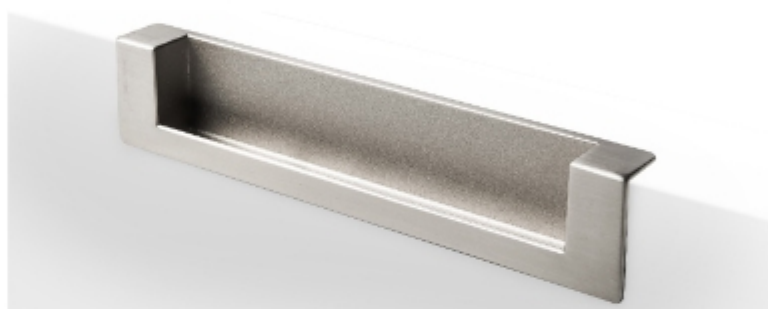
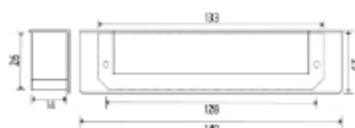
## Stilvolle

Code	Finish	CC	Length	Height	Depth
2088	SC	160	203	39	13
2089	SC	224	284	39	13
2090	SC	320	374	39	13



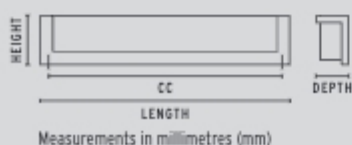
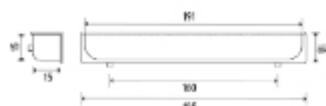
## Oriane Inset Handle

Code	Finish	CC	Length	Height	Depth
4815	BN	128	149	13.5	
4816	SB	128	149	13.5	



## Romola Reverse Inset

Code	Finish	Length	Height	Depth
6223	MC	195	18	18
6224	CP	195	18	18

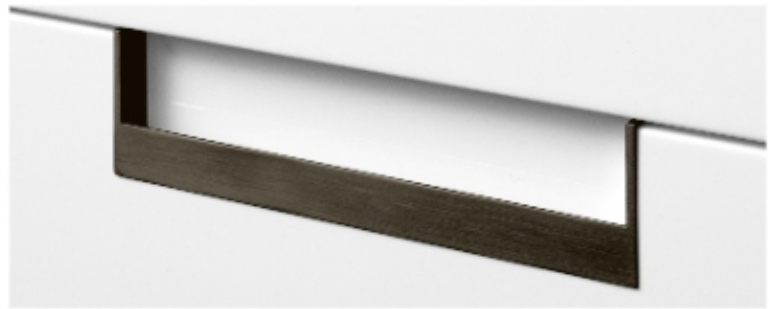


PLEASE CHECK MEASUREMENTS OF HANDLE BEFORE INSTALLING. MEASUREMENTS CAN CHANGE WITHOUT NOTICE.

### Ultimate Inset

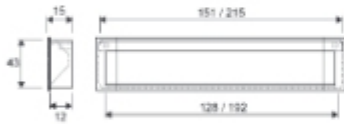
Code	Finish	Length	Height	Depth
6225	BN	202	50	16
6226	GM	202	50	16

For use with painted doors



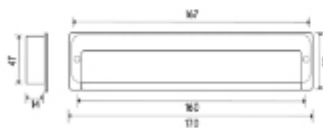
### Flush Pull

Code	Finish	CC	Length	Height	Depth
7178	MC	128	151	43	15
7179	MC	192	215	43	15



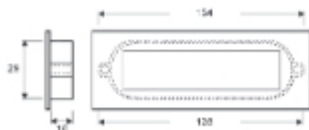
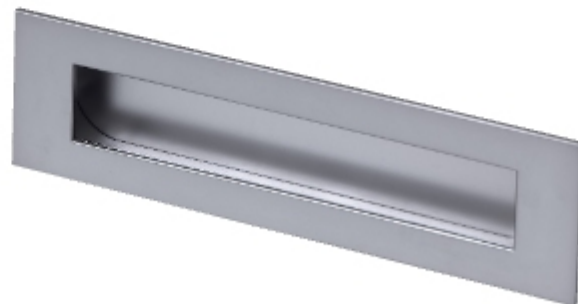
### Rosette

Code	Finish	CC	Length	Height	Depth
7185	BN	160	170	55	16
7186	MC	160	170	55	16



### Rectangle

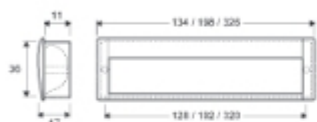
Code	Finish	CC	Length	Height	Depth
7760	SC	128	134	39.5	10



PLEASE CHECK MEASUREMENTS OF HANDLE BEFORE INSTALLING. MEASUREMENTS CAN CHANGE WITHOUT NOTICE.

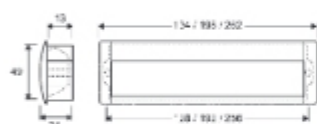
### Elite Inset

Code	Finish	CC	Length	Depth
7765	BN	128	134	17
7767	BN	192	198	17
7769	BN	320	326	17
7761	SB	128	134	17
7762	SB	192	198	17



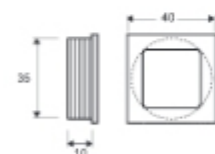
### Contemporary Inset

Code	Finish	CC	Length	Depth
7774	SC	128	134	21
7776	SC	192	198	21
7778	SC	256	262	21



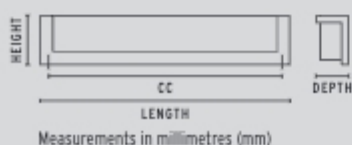
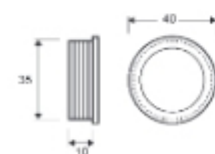
### Elite Square Pull

Code	Finish	Length	Width	Depth
7780	SC	40	40	10
7783	BN	40	40	10



### Elite Round Pull

Code	Finish	Length	Width	Depth
7781	BN	40	40	10



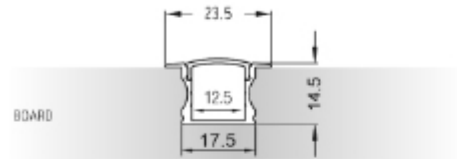


elite lumina lighting extrusions

PLEASE CHECK MEASUREMENTS OF EXTRUSION BEFORE CUTTING AND INSTALLING. MEASUREMENTS CAN CHANGE WITHOUT NOTICE.

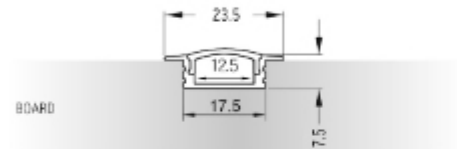
### Zeus LED 14.5mm Inset Extrusion

Code	Finish	Defuser	Length
8610	Silver	Milky White	3 metre
8619	Silver		End Cap



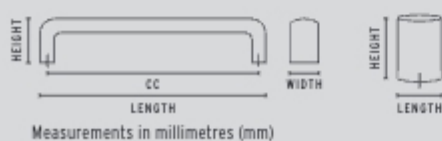
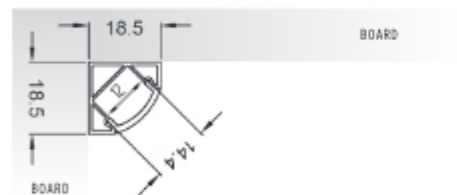
### Zeus LED 7mm Inset Extrusion

Code	Finish	Defuser	Length
8611	Silver	Milky White	3 metre
8620	Silver		End Cap
8607	Black	Milky White	3 metre
8608	Black		End Cap



### Neri LED 18.5mm Corner Extrusion

Code	Finish	Defuser	Length
8618	Silver	Milky White	3 metre
8626	Silver		End Cap

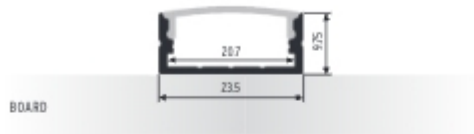




PLEASE CHECK MEASUREMENTS OF EXTRUSION BEFORE CUTTING AND INSTALLING. MEASUREMENTS CAN CHANGE WITHOUT NOTICE.

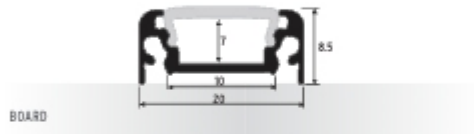
### Eos LED 9.5mm Surface Extrusion

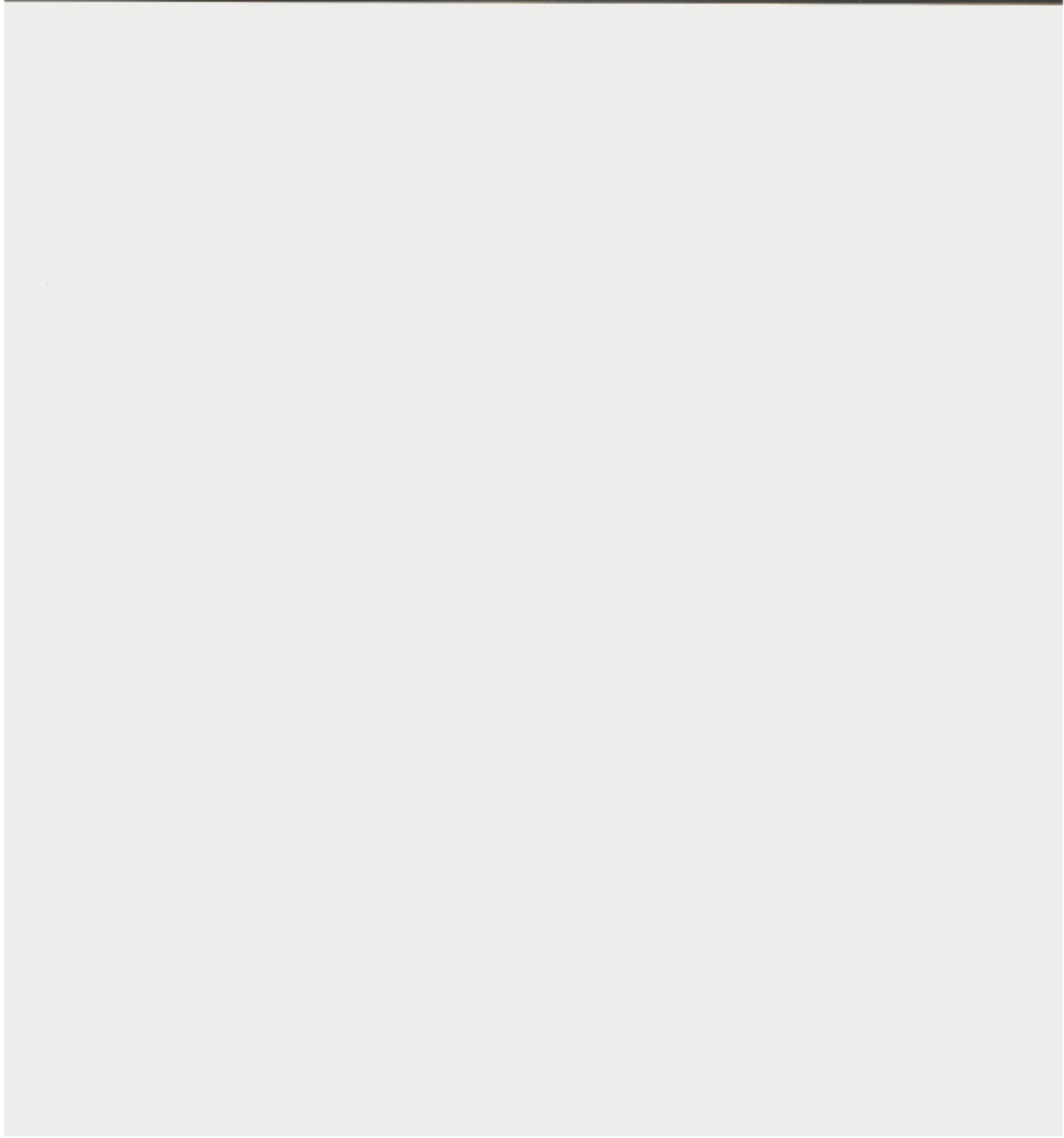
Code	Finish	Defuser	Length
8616	Silver	Milky White	3 metre
8627	Silver		End Cap



### Lyra LED 8.5mm Surface Extrusion

Code	Finish	Defuser	Length
8615	Silver	Milky White	3 metre
8624	Silver		End Cap







elite extrusion handles

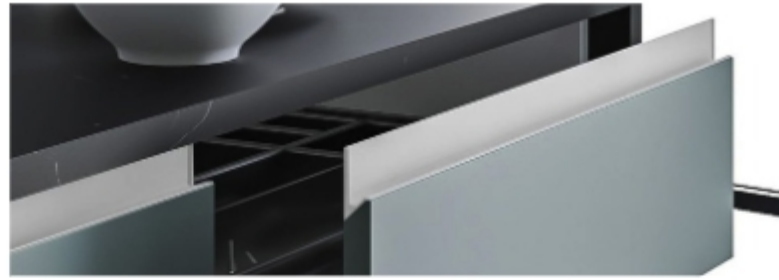
PLEASE CHECK MEASUREMENTS OF EXTRUSION BEFORE CUTTING AND INSTALLING. MEASUREMENTS CAN CHANGE WITHOUT NOTICE.

### Can't find the right extrusion?

#### Clip System Assembled Sets

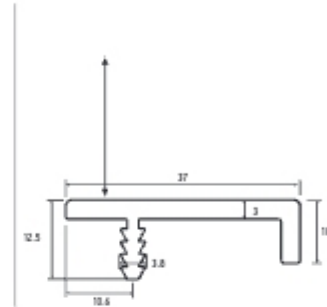
- Each length comes with a set of 5 end caps & clips
- Various profile & colour options available
- European design
- Easy installation

See the 'Clip Systems' in this catalogue for more.



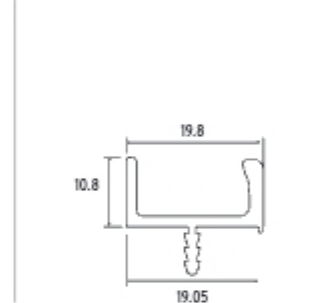
### Sachi Top Mount Handle

Code	Finish	Length	Height	Depth
8878	MC	3m	10	37



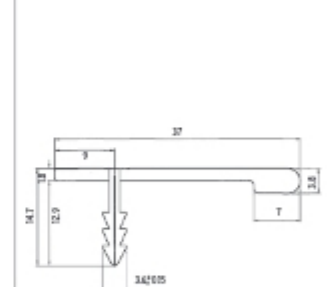
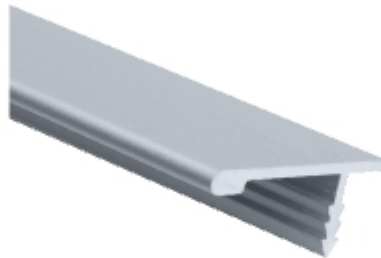
### Benito Open Handle Top Section

Code	Finish	Length	Height	Depth
8877	MC	3m	10.8	19



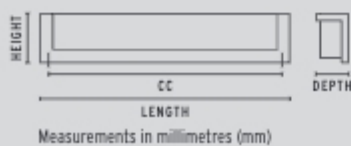
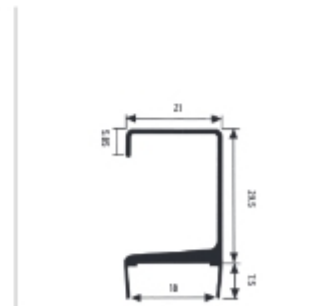
### Rosa Top Mount Handle

Code	Finish	Length	Height	Depth
8891	MC	3m	14.7	37



### Cosima Clip On G Profile

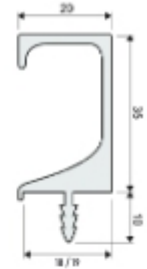
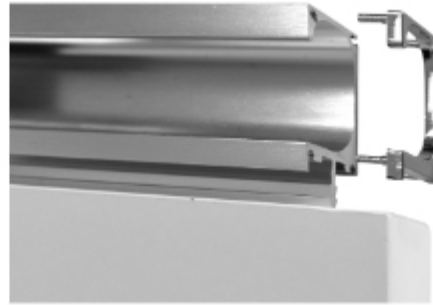
Code	Finish	Length	Height	Width
8699	MN	3m	29.5	18



PLEASE CHECK MEASUREMENTS OF EXTRUSION BEFORE CUTTING AND INSTALLING. MEASUREMENTS CAN CHANGE WITHOUT NOTICE.

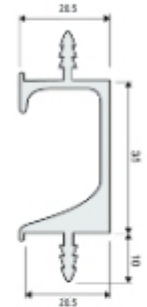
### Allegra G Profile with End Caps

Code	Finish	Length	Height	Board Width
8701	MN	3m	35	18
8702	SB	3m	35	18
8703	AW	3m	35	18
8691	MN	End Caps Pair		
8692	SB	End Caps Pair		
8693	AW	End Caps Pair		



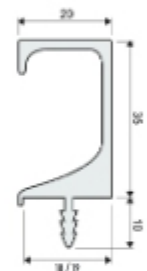
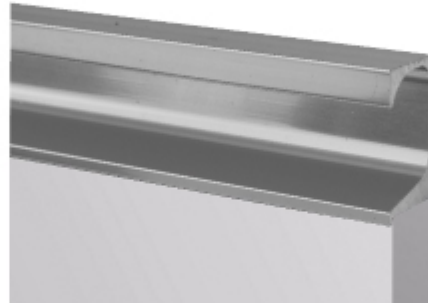
### Novara G Central Profile

Code	Finish	Length	Height	Board Width
8890	MC	3m	35	18



### Novara G Profile

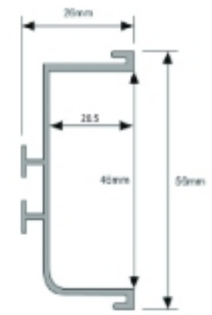
Code	Finish	Length	Height	Board Width
8897	MC	3m	35	18
8899	SB	3m	35	18
8901	MN	3m	35	18
8902	Raw	3m	35	18
No finish ready for powder coating				



PLEASE CHECK MEASUREMENTS OF EXTRUSION BEFORE CUTTING AND INSTALLING. MEASUREMENTS CAN CHANGE WITHOUT NOTICE.

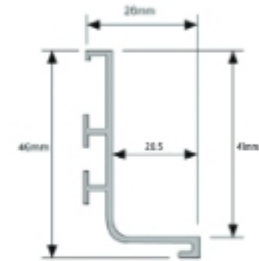
### Apollo Centre Profile

Code	Finish	Length	Height	Board Width
8881	MC	3m	56	19
8882	SB	3m	56	19
8889	AW	3m	56	19



### Apollo Top Profile

Code	Finish	Length	Height	Board Width
8883	MC	3m	44	19
8884	SB	3m	44	19
8887	AW	3m	44	19



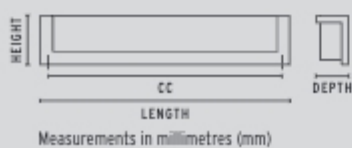
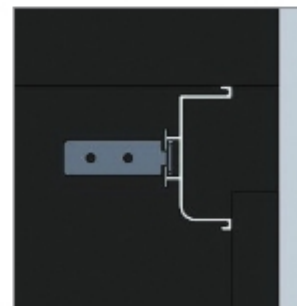
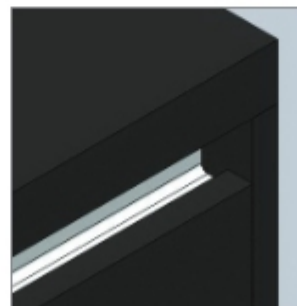
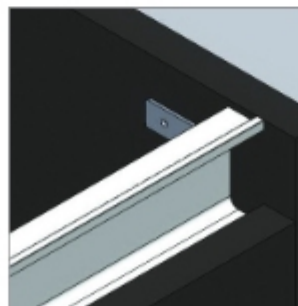
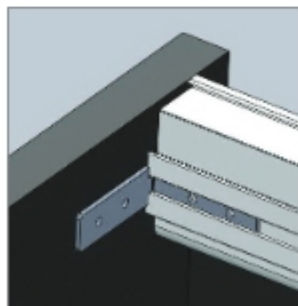
### Apollo Bracket

Code	Finish	Length	Height	Width
8885	ZINC	35	35	13



### Apollo Bracket Screw

Code	Finish	Height	Width
8886	ZINC	8	M-4

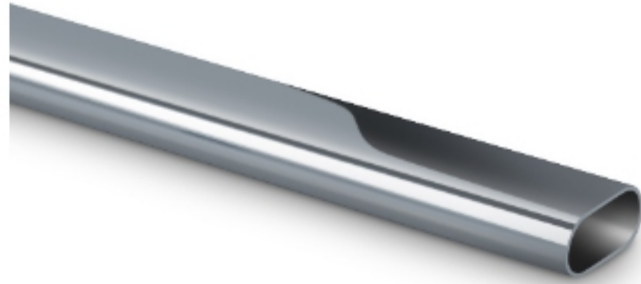




elite wardrobe fittings

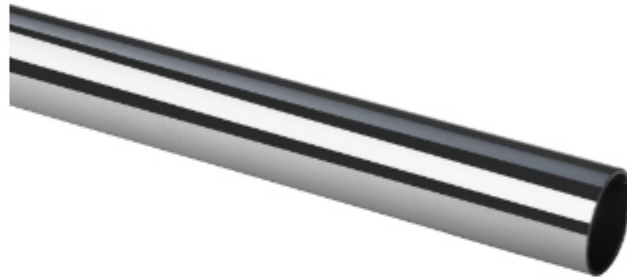
### Oval Wardobe Rail

Code	Length	Height	Width	Thickness	Finish
9100	3m	30	15	1.2	Chrome Plated



### Round Tube

Code	Length	Width	Thickness	Finish
9400	3m	25	1.2	Chrome Plated



### Belt Hanger

Code	Length	Depth	Height	Can be cut down to:
8341	450	65	81	350



### Tie Rack

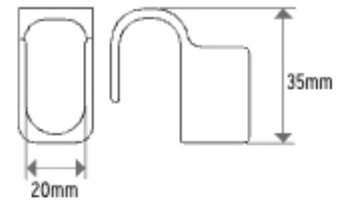
Code	Length	Depth	Height	Can be cut down to:
8342	450	65	81	350





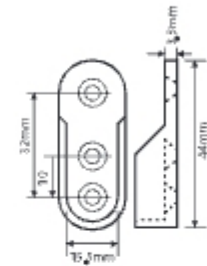
### Angle Corner Bracket - Light Grey

Code	Height	Finish
9110	35	Light Grey



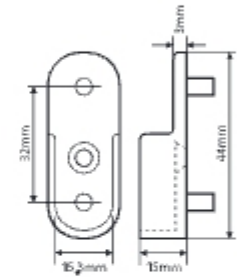
### Rail Bracket - Screw On

Code	Height	Finish
9101	44	Nickel



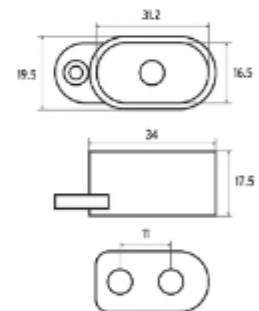
### Rail Bracket - Dowel

Code	Height	Finish
9102	44	Nickel



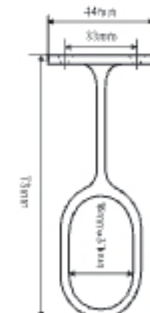
### Concealed Bracket

Code	Height	Finish	Fits
9109	31.2	Chrome Plated	30 x 15mm Tube



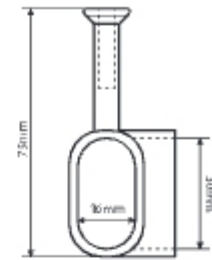
### Slim Centre Bracket

Code	Height	Finish
9103	73	Chrome Plated



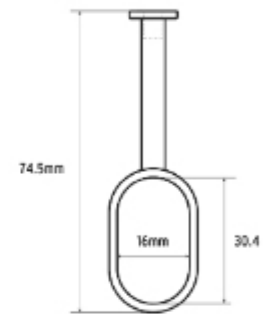
### Rail Corner Bracket

Code	Height	Finish
9106	73	Chrome Plated



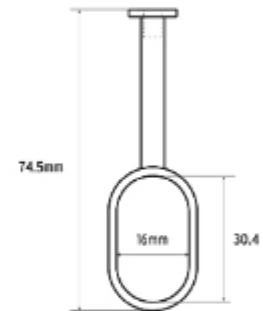
### End Bracket

Code	Height	Finish
9108	74.5	Chrome Plated



### Centre Bracket

Code	Height	Finish
9107	74.5	Chrome Plated



### Flange

Code	Finish	For use with:
9401	Chrome Plated	25mm Round Tube



### Top Hanging Bracket

Code	Finish	Height	For use with:
9403	Chrome Plated	135	25mm Round Tube





italiana ferramenta

## K Push Tech - Push to Open System

K PUSH TECH is the fully renewed and extended program of automatic opening systems for doors without handles or knobs. A special inner mechanism provides a very silent, yet powerful utilization, granting a long durability which makes it perfectly suitable for a wide range of doors.

K PUSH TECH is available with buffer, for cabinets using sprung hinges, and with magnet, for cabinets using unsprung hinges or negative hinges. The aesthetic of buffers is now improved and the range of catch plates for version with magnet is even wider.

Lengths of the output paths: Medium - 20 mm, Long - 37 mm.

Ring thickness is 0,6 mm. Increased adjustment feature: +6 / -0,45 mm.

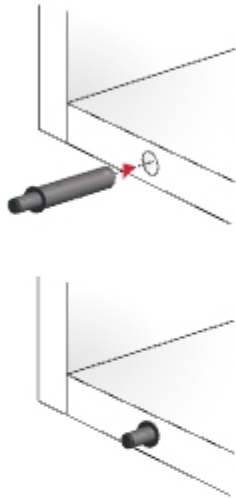
Beyond this negative adjustment the spring is deactivated. This feature allows to disable the ejector pin for safety reasons.

Perception of steps indicating the adjustment of the ejector pin: every step-stop position adjusts the door gap by 0.15 mm. A click-stop indicates the maximum adjustment range. These features prevent any undesired change of position of the ejector pin during its utilisation.

Highest magnet strength available in the market. New high performing materials to withstand unusual stresses and to avoid parts' damages. The new magnets are installed completely flush with the head of the ejector pin, in order to avoid any scratches on the door plates.

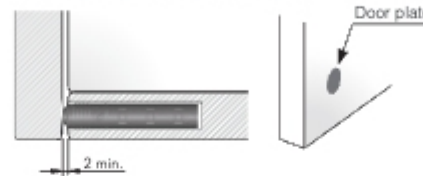
PAT. PENDING REGISTERED DESIGN

### INSTALLATION TO BE EMBEDDED INSIDE THE PANEL

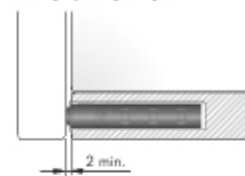


For details refer to K PUSH TECH and K LOCK DOOR PLATES.

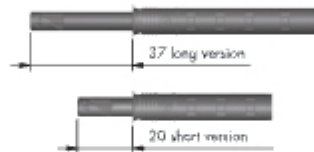
### WITH MAGNET for cabinets using unsprung hinges or negative hinges



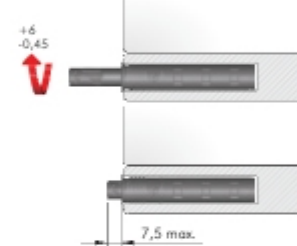
### WITH BUFFER for cabinets using sprung hinges



### VERSIONS



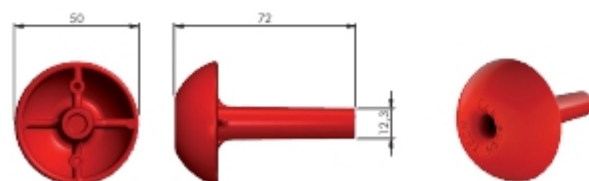
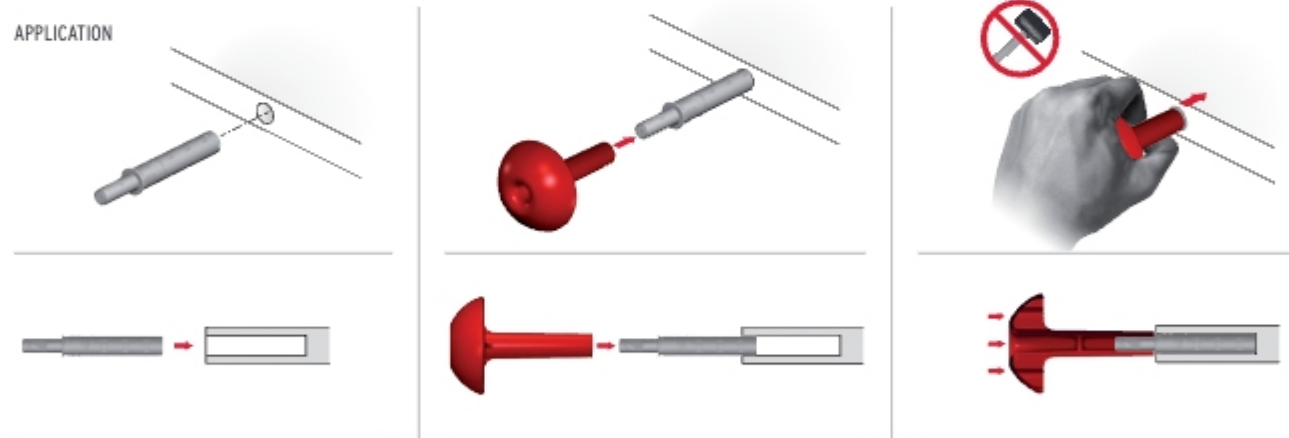
### ADJUSTMENTS



## K Push Tech Installing Tool

Code	Material
57112000R0	Engineering Plastic

### APPLICATION

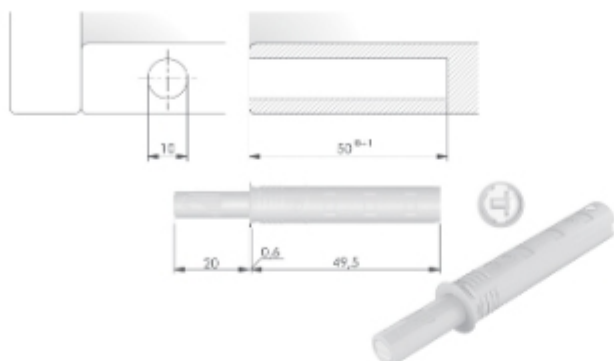


### Push Catch Magnetic Short

Code	Colour	Material
57004023AB	White	Steel, Engineering Plastic



WITH MAGNET

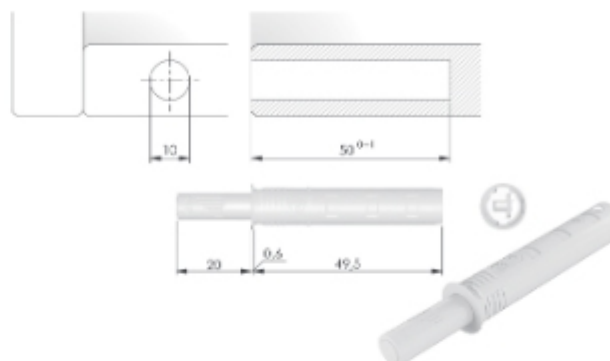


### Push Catch Buffer Short

Code	Colour	Material
57004043AB	White	Steel, Engineering Plastic, Soft Rubber



WITH BUFFER

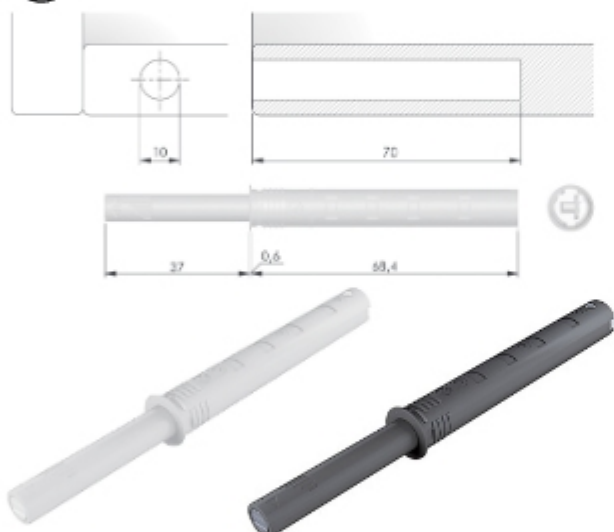


### Push Catch Magnetic Long

Code	Colour	Material
57008020AB	White	Steel, Engineering Plastic
57008020EE	Anthracite	Steel, Engineering Plastic



WITH MAGNET

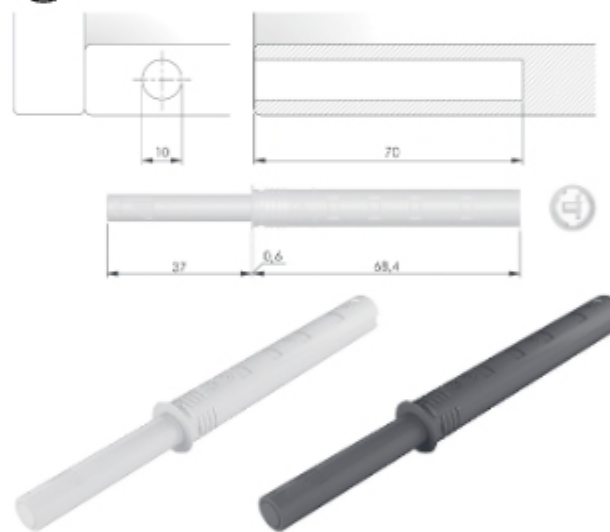


### Push Catch Buffer Long

Code	Colour	Material
57008043AB	White	Steel, Engineering Plastic, Soft Rubber
57008040EE	Anthracite	Steel, Engineering Plastic, Soft Rubber



WITH BUFFER



### Adapter Shell Housing for Long Version

Code	Colour	Material
57025020AB	White	Engineering Plastic
57025020EE	Anthracite	Engineering Plastic



### Adapter Mounting Plate for Long Version

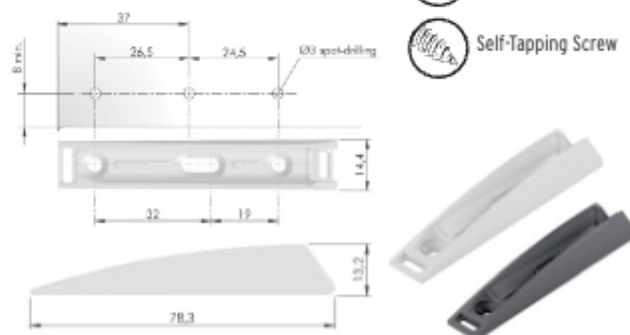
Code	Colour	Material
57025040AB	White	Engineering Plastic
57025040EE	Anthracite	Engineering Plastic



= Ø 2.5mm

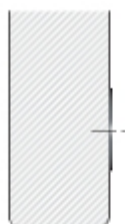


Self-Tapping Screw

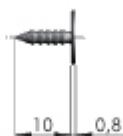
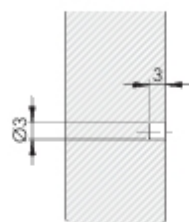


## K Push Tech and K Lock Door Plates

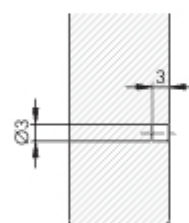
Code	Material	System
55006020XD	Steel	Self Adhesive



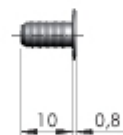
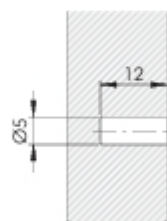
Code	Material	System
55006030YA	Steel	3mm Pin



Code	Material	System
55006100YA	Steel	3mm Screw On

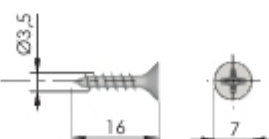
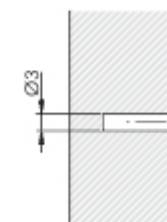


Code	Material	System
55006040YA	Steel	5mm Knock In



## Fixing Accessory for K Push Tech Adapter Plates

Code	Material	System
60101390ZN	Steel	3mm Screw On





legs & towel rails

## Square Leg

Code	Height	Finish	Leg Width
1234	100	Chrome	30
1236	150	Chrome	30



## Adjustable Guide M10

Code	Height	Finish	Leg Width	Thread
1239	113	Brushed Nickel	45	M10

Suitable for leg 1246 and 1247



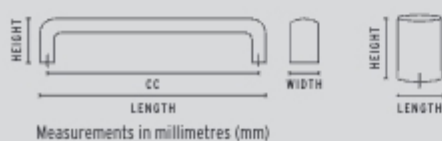
## Round Leg - Adjustable

Code	Height	Finish	Leg Width
1246	100	Brushed Nickel	30
1247	150	Brushed Nickel	30



## Square Leg Aluminium

Code	Height	Finish	Leg Width
1240	80	Aluminium	40
1244	100	Aluminium	40
1250	150	Aluminium	40
1255	200	Aluminium	40





### Table Leg

Code	Size	Diameter	Finish
7235	710	60	Brushed Nickel



### Towel Rail

Code	Length	CC	Finish
1123	268	230	Chrome
1135	344	306	Chrome
1140	445	406	Chrome









## Contact Us

**Elite Hardware Ltd**  
Unit 4, 56 Hayton Road  
(corner of Hayton Road and Dakota Crescent),  
Christchurch 8042, New Zealand.

**Tel:** 03 348 0296

**Fax:** 03 348 0297

**Orders:** [sales@elitehardware.co.nz](mailto:sales@elitehardware.co.nz)

**Admin:** [admin@elitehardware.co.nz](mailto:admin@elitehardware.co.nz)

[www.elitehardware.co.nz](http://www.elitehardware.co.nz)

  @elitehardwareltd

---

## About Us

Elite Hardware is a New Zealand owned and operated company supplying kitchen and furniture hardware with the main emphasis on cabinet handles. We pride ourselves in providing excellent knowledgeable service and quality products at competitive rates.

Our products are imported directly to our Christchurch warehouse. The majority of these products are unique to Elite Hardware. The full range of these products can also be viewed online on our website [www.elitehardware.co.nz](http://www.elitehardware.co.nz)



---

## Installation Warning

**After purchasing handles from Elite Hardware Ltd, please check that you have the correct size and finish.**

**Elite Hardware Ltd will not be held responsible for incorrect hole drilling and fitting.**

**Finishes can vary slightly between shipments.**

**Photos in this catalogue are as close to the finished product as possible.**

**Colour shades can vary due to printing process.**

**All handles are guaranteed against faulty workmanship.**

**Products are subject to change.**

**Elite Hardware Ltd holds no responsibility for any errors shown in this publication.**

**All measurements are in millimetres unless otherwise stated.**